

PAPER • OPEN ACCESS

Preface

To cite this article: 2021 *IOP Conf. Ser.: Earth Environ. Sci.* **715** 011001

View the [article online](#) for updates and enhancements.



240th ECS Meeting ORLANDO, FL

Orange County Convention Center **Oct 10-14, 2021**

Abstract submission deadline extended: April 23rd

SUBMIT NOW

Preface

The 2nd International Conference on Agriculture and Rural Development (The 2nd ICARD)

The 2nd International Conference on Agriculture and Rural Development (The 2nd ICARD) had a theme “The Challenges of Sustainable Agriculture in the New Normal Era”. The conference was still held during the pandemic of covid-19 due to the great enthusiasm to have an event discussing the covid-19 impacts on agriculture, food, and rural livelihood. The travel restriction was also the reason to carry out the conference via online platform. Thus, it proceeded as the original agenda.

The 2nd ICARD was held on 16 November 2020 and organized by the Faculty of Agriculture, University of Sultan Ageng Tirtayasa (Untirta), Indonesia. It also became the framework of collaboration among the Faculty of Agriculture Untirta, Kazan National Research Technological University-Rusia, Gorgan University of Agricultural Sciences and Natural Resources-Iran and Universiti Teknologi MARA-Malaysia. The main sponsors of this conference were the Ministry of Education and Culture, and Indonesia agronomist association (PERAGI).

The 2nd ICARD was managed properly with virtual meeting and arranged into two sessions; they were oral presentations from keynote speakers as a plenary session and scholar presenters as a parallel session. In the first session, the respective keynote speaker was each allocated 40 minutes to hold the speech consist of 30 minutes for presentation and 10 minutes for discussion (Q and A). Four keynote speakers contributed to the plenary session. Assist. Prof. Dr. Yudi L.A. Salampessy from Untirta was talking about *Mining and Biodiversity Comics Publishing to the Elementary School Students around Mine Areas*. Also, our beloved keynote speaker Assoc. Prof. Dr. Saed Gorgin, from Gorgan University of Agricultural Sciences and Natural Resources, Iran, was presenting his study on *the Strategy of Shelf-Life Extension to Keep the Quality of Conical Lift net Catch for Sustainability in New Normal Era*. Furthermore, the third keynote speaker from Malaysia, Assoc. Prof. Dr. Asmah Awal (Universiti Teknologi MARA) was giving a great valuable presentation about *Sugar Palm (Arenga pinnata Wurmb Merr.): A Review on Plant Tissue Culture Techniques for Effective Breeding*. Moreover, our last keynote speaker Assoc. Prof. Elena Nikitina, Ph.D from Kazan National Research Technological University, Rusia, shared her study about *Potato Starch as a Component Increasing the Antioxidant Potential of Yogurt*. In the second session, the scholar presenters whose had submitted the selected paper were conferred 15 minutes including Q and A to speech the presentation one by one. They had divided into different rooms based on their scope of study.

The 2nd ICARD was attended by presenters from five countries, Indonesia, Germany, Malaysia, Russia, and Iran. Four keynote speakers and 80 scholar presenters attended to this conference. Research topics were divided into five main scopes focusing on Agricultural and



Environmental Sciences, Agribusiness and Agricultural Resource Economics, Fishery and Marine Sciences, Forestry/Silviculture, and Food Science and Agricultural Product Technology.

The 2nd ICARD was successfully run via a “Zoom” application meeting. All participants joined in a plenary room when the keynote speakers presented their research. As soon as the plenary session was over, the participants were assigned into a “breakout” room based on their topic of interests. Finally, they joined in the plenary room for the closing ceremony. We would like to mention that all of the participants were satisfied with both the conference performance on the D-day and the organizer responses during the paper submission process.

Lastly, we would like to thank to the chairman, scientific committees, keynote speakers, and all participants. We greatly thanks to the publisher for publishing the 2nd ICARD selected papers. We are looking forward to more scholars to join in this conference next year.

LIST OF COMMITTEE
“THE 2nd INTERNATIONAL CONFERENCE ON
AGRICULTURE AND RURAL DEVELOPMENT (THE 2nd
ICARD)”

16 November 2020, Serang City, Indonesia

Organizing Committee:

Chairperson : Dr. nat. techn. Weksi Budiaji, S.Si.,
M.Sc Secretary : Nur Iman Muztahidin, S.P., M.Sc
Treasurer : Tatang Sutisna, S P.,
M.Sc Public Relation : Dr. Susiyanti, S P., MP
Life event : Ratna Mega Sari., S E., M.Si
Editor in Chief : Dr. Adi Susanto, S.Pi., M.Si
Editors : Rifqi Ahmad Riyanto, S.Sc.,
M.Si
Dr. Fitria Riany Eris, S.P., M.Si
Dr. Juwarin Pancawati, S.P.,
M.Si Dr. Ririn Irnawati, S.Pi.,
M.Si
Dr. Andy Saryoko, S.P., M.P
Dr. Yuyu Romdhonah, S.TP., M.Si

Scientific Committee:

Prof. Dr. Nurmayulis, Ir., M.P., University of Sultan Ageng Tirtayasa, Indonesia
Elena Nikitina, Ph.D, Kazan Federal University, Rusia
Dr. SaedGorgin, Iran, Gorgan University of Agricultural Sciences and Natural Resources, Iran
Dr. Asmah Awal, Universiti Teknologi MARA, Malaysia
Dr. Willy Bayu ardi Suwarno, IPB University, Indonesia
Dr. Yudi L.A. Salampessy, SE., M.Si., University of Sultan Ageng Tirtayasa, Indonesia

Piracy Threat – Important update to keep your details safe and secure. [Click here for further information.](#)

Table of contents

Volume 715

2021

◀ Previous issue Next issue ▶

The 2nd International Conference on Agriculture and Rural Development 16 November 2020, Serang City, Banten, Indonesia

Accepted papers received: 10 March 2021

Published online: 07 April 2021

Open all abstracts

Preface

OPEN ACCESS 011001

Preface

+ Open abstract  View article  PDF

OPEN ACCESS 011002

Conference Photographs

+ Open abstract  View article  PDF

OPEN ACCESS 011003

Peer review declaration

+ Open abstract  View article  PDF

Agribusiness and Agricultural Resource Economics

OPEN ACCESS 012001

Visitors' Perceptions of Cultivation Technology Innovation in Agro Innovation Park, BPTP Jambi

S Edi and Rustam

+ Open abstract  View article  PDF

This site uses cookies. By continuing to use this site you agree to our use of cookies. To find out more, see our [Privacy and Cookies policy](#).

OPEN ACCESS



Farm Business Analysis of Crops in Tidal Land (Case Study in Rantau Makmur Village, Rantau Rasau District) 012002

Adri and Yardha

[+ Open abstract](#) [View article](#) [PDF](#)

OPEN ACCESS 012003

Communication Networks of On-Farm Rubber in Riau Province, Indonesia

R Yulida, R Rosnita, Y Andriani and M Ikhwan

[+ Open abstract](#) [View article](#) [PDF](#)

OPEN ACCESS 012004

Quantifying the Reliable Discharges as an Incipient Analysis of Agricultural Planning and Developing in Ciujung Watershed

N P Purnaditya and S Asyiah

[+ Open abstract](#) [View article](#) [PDF](#)

OPEN ACCESS 012005

Revenue and Feasibility Analysis of Celery (*Apium Graveolens* L.) in Lingkar Selatan Village Paal Merah District Jambi City

Suharyon and S Edi

[+ Open abstract](#) [View article](#) [PDF](#)

OPEN ACCESS 012006

Distribution Mapping of Rice, Corn, and Soybean Production Based on Geographic Information Systems in Pandeglang Regency

N Hermita, A T Sumantri, R A Riyanto and A Mulyaningsih

[+ Open abstract](#) [View article](#) [PDF](#)

OPEN ACCESS 012007

Environmental Carrying Capacity for Food Availability in Pandeglang Regency, Banten Province

Mirajiani

[+ Open abstract](#) [View article](#) [PDF](#)

OPEN ACCESS 012008

Possible Use of Food Security and Vulnerability Atlas (Fsva) to Detect Problem on Poverty and Stunting, The Case of Banten Province

Y Budiawati, R Z Islami, T Perdana and R S Natawidjaja

[+ Open abstract](#) [View article](#) [PDF](#)
This site uses cookies. By continuing to use this site, you agree to our use of cookies. To find out more, see our Privacy and Cookies policy.



OPEN ACCESS

012009

Analysis on Factors Affecting The Risk of Rice Farming Production in West Tanjung Jabung Regency

Yardha, E Wahyudi and A Wafi

[+ Open abstract](#) [View article](#) [PDF](#)**OPEN ACCESS**

012010

Risk Analysis of Rice Farming in Alue Merbau Village, East Langsa Sub-District, Langsa City

F H Saragih, Hanisah and F Alham

[+ Open abstract](#) [View article](#) [PDF](#)**OPEN ACCESS**

012011

The Role of the Sawangan Organic Rice Farmers Association in Increasing the Economic Value of Organic Rice: Case Study in Sawangan, Magelang

A Setiawati, M Wijaya and R Setyowati

[+ Open abstract](#) [View article](#) [PDF](#)**OPEN ACCESS**

012012

Demand for Agricultural Product and Sustainable Development Issues: Empirical Studies from Household Survey

M Rasyid

[+ Open abstract](#) [View article](#) [PDF](#)**OPEN ACCESS**

012013

Analysis of the Role of Livestock Sub-Sector in Economic Growth in West Sumatra

A Suresti, F Tan, Adrimas and U Dinata

[+ Open abstract](#) [View article](#) [PDF](#)**OPEN ACCESS**

012014

The Effect of Personal and Situational Factors on The Performance of Agriculture Extention Worker on the Behavior of Seeking Information as an Intervening Variabel (Study Case in Lebak Regency Banten Province)

L Nurhayati, Nurmayulis and Y L A Salampessy

[+ Open abstract](#) [View article](#) [PDF](#)**OPEN ACCESS**

012015

Effectiveness of Media and Communication Forms to Promote a Positive Behavior of the Society around Untirta New Campus toward Environmental Preservation

This site uses cookies. By continuing to use this site you agree to our use of cookies. To find out more, see

[Our Privacy and Cookies Policy](#) [A Muldi](#)

[+ Open abstract](#)[View article](#)[PDF](#)

Agricultural and Environmental Sciences

OPEN ACCESS

012016

Sugar palm (*Arenga pinnata* Wurmb Merr.): a review on plant tissue culture techniques for effective breeding

NA Muda and A Awal

[+ Open abstract](#)[View article](#)[PDF](#)**OPEN ACCESS**

012017

Tuba root (*Derris elliptica* Benth) flour extract concentration assay to control the corn cob borer (*Helicoverpa armigera* Hubn.)

R Rustam, D Salbiah, R Rismawanto and R Saputra

[+ Open abstract](#)[View article](#)[PDF](#)**OPEN ACCESS**

012018

Improvement of shallots (*Allium ascalonicum*) cultivation on paddy fields to increase shallots yields and farmers' income during the Covid-19 pandemic

D Haryani, M C Hadiatry, S Yuniarti and R Purba

[+ Open abstract](#)[View article](#)[PDF](#)**OPEN ACCESS**

012019

The study of composting system and its use in supporting vegetable cultivation in Kepulauan Seribu - Jakarta

A F C Irawati, Y Sastro, Ikrarwati and S Sutardi

[+ Open abstract](#)[View article](#)[PDF](#)**OPEN ACCESS**

012020

The success factor in developing an energy independent village in Klaten Central Java

D W Ningtyas, Suwarto and E Lestari

[+ Open abstract](#)[View article](#)[PDF](#)**OPEN ACCESS**

012021

Correlation study of soil test on phosphorus in ultisol soil for shallots (*Allium ascalonicum* l.)

I P Lestari, A D Susila, A Sutandi and D Nursyamsi

[+ Open abstract](#)[View article](#)[PDF](#)

This site uses cookies. By continuing to use this site you agree to our use of cookies. To find out more, see our Privacy and Cookies policy.



OPEN ACCESS

012022

Morphological characterization and development potential of beneng variety (*Xanthosoma undipes* K. Koch) Pandeglang - Banten

Z Yursak, I Hidayah, A Saryoko, S Kurniawati, O Ripasonah and P N Susilawati

[+ Open abstract](#) [View article](#) [PDF](#)

OPEN ACCESS

012023

Heavy metal uptake and transition across the links of soil-plant-animal-food chain

R Volkov and D Samigullin

[+ Open abstract](#) [View article](#) [PDF](#)

OPEN ACCESS

012024

Potassium nutrition differentially affect early growth and leaf greenness of shallot under micro sprinkle fertigation in dry land

A Laila, M Sari, N I Muztahidin, A A Fatmawaty and N Hermita

[+ Open abstract](#) [View article](#) [PDF](#)

OPEN ACCESS

012025

Increasing shelf life of rhizobacteria formula with alginate in encapsulation during storage

J E R Rumbiak and S Hilal

[+ Open abstract](#) [View article](#) [PDF](#)

OPEN ACCESS

012026

Mapping Distribution Approach in Various Types of Use Sub-Optimal Dry Land in Aceh Besar District

H A Umar, S Sufardi, S Syafruddin and T Arabia

[+ Open abstract](#) [View article](#) [PDF](#)

OPEN ACCESS

012027

Efficacy of Red Betel Leaf's (*Piper crocatum*) Chloroform Extract as Repellent Against Rice Bugs *Leptocorisa acuta* Thunberg, 1783 (Hemiptera: Alydidae)

F Saraswati, A S Herdiannanta and R C H Soesilohadi

[+ Open abstract](#) [View article](#) [PDF](#)

OPEN ACCESS

012028

A Model for Accelerating Rice Planting in Paddy Fields to Provide Food in Banten Province during the Covid-19 Pandemic

Kardiyono, T Mulyaqin, P N Susilawati, D Haryani, I Setyowati and H. Ismatul

[+ Open abstract](#) [View article](#) [PDF](#)

This site uses cookies. By continuing to use this site, you agree to our use of cookies. To find out more, see our Privacy and Cookies policy.



OPEN ACCESS

012029

Yield Performance of Shade Tolerant Soybean Cultivars under Shaded Environment at Various Planting Densities

A Saryoko, Z Yursak, Y Astuti, S Kurniawati, S Kusumawati and T Mulyaqin

[+ Open abstract](#)
[View article](#)
[PDF](#)

OPEN ACCESS

012030

Yield ability and grain quality of upland rice in Sukabumi and Lampung

R Hermanasari, A P Lestari, Yullianida, A Hairmansis, Santoso and A Nasution

[+ Open abstract](#)
[View article](#)
[PDF](#)

OPEN ACCESS

012031

Improving Rice Productivity Through the Implementation of Jajar Legowo Super (Jarwo Super) Technology in Jambi Province

Endrizal, Jumakir and J Bobihoe

[+ Open abstract](#)
[View article](#)
[PDF](#)

OPEN ACCESS

012032

Screening of Rizoplan Rhizobacteria for Suppression of Bacterial Wilt (*Ralstonia solanacearum*) and Promoting the Growth on Chili (*Capsicum annum*)

J E R Rumbiak and S Hilal

[+ Open abstract](#)
[View article](#)
[PDF](#)

OPEN ACCESS

012033

Characterization of Performance 12 Superior Lines of Upland Rice Planted in Two Environmental Condition

E S Mulyaningsih, Y G D Anggraheni, E B M Adi, N Burhana and L Santun

[+ Open abstract](#)
[View article](#)
[PDF](#)

OPEN ACCESS

012034

Hybridization and In Vitro Seed Germination of a Commercial Hybrid *Oncidium* Orchid in Indonesia

S Rianawati, Suryanah, Syafni, Musalamah, K Dwiatmini and B Marwoto

[+ Open abstract](#)
[View article](#)
[PDF](#)

OPEN ACCESS

012035













The performance of the brown planthopper (*Nilaparvata lugens*) population and predators on endemic lowland rice areas of Banten Province

P N Satriawati, S Kurniawati, Y Astuti, Y Suryanah and I Setyowati

[+ Open abstract](#)
[View article](#)
[PDF](#)

This site uses cookies. By continuing to use our site, you agree to our use of cookies. To find out more, see our Privacy and Cookies policy.



-
- OPEN ACCESS** 012036
Yield of Soybean and Corn Intercropping Farming in Rainfed Lowland in Central Lampung, Lampung Province
 Slameto, Meidaliyantisyah, Agung Lasmono and Wahyu Wibawa
 + Open abstract  View article  PDF
-
- OPEN ACCESS** 012037
Increasing Planting Density of Maize Trough Double Row Cropping System to Improves Seed Yield
 A Saryoko, Y Giamerti, Z Yursak, P N Susilawati, S Kusumawati, Kardiyono and N Winanti
 + Open abstract  View article  PDF
-
- OPEN ACCESS** 012038
The Effect of Basic Fertilizer Doses On Soybean Growth And Production
 T Liana, D. Irwandy and A Bhermana
 + Open abstract  View article  PDF
-
- OPEN ACCESS** 012039
Quality of Growth Media and Yields of *Allium ascolanicum* L. on Ultisol Soil Combined with Rabbit Manure
 Ikrarwati, N A Syamsi, Y Sastro, T B Rusbana, N R Sudolar and Y Romadhonah
 + Open abstract  View article  PDF
-
- OPEN ACCESS** 012040
Optimization of Annealing Cycle and Temperature SNAP T12 Primer Distinguishing Markers for Male, Female and Hermaphrodite Plants in Papaya (*Carica papaya* L)
 Noflindawati, A Anwar, A Sutanto and Yusniwati
 + Open abstract  View article  PDF
-
- OPEN ACCESS** 012041
Implementation of Eco-friendly Technologies to Control Bacterial Leaf Blight of Rice Disease (*Xanthomonas oryzae* pv. *oryzae*)
 S Kurniawati, Y Astuti, Y S Hidayat and E Y Susanti
 + Open abstract  View article  PDF
-
- OPEN ACCESS** 012042
Application of New Superior Varieties of Irrigated Land Rice within Integrated Crop Management
 R Yusuf, F Fuadi, A S Alim, P N Istina and N Sutrisna

This site uses cookies. By continuing to use this site you agree to our use of cookies. To find out more, see our Privacy and Cookies policy



[+ Open abstract](#) [View article](#) [PDF](#)

OPEN ACCESS

012043

Interaction of Genetic and Zn Fertilizer Application on Rice Yield and Grain Zinc Content

U Susanto, C Gunarsih and W R Rohaeni

[+ Open abstract](#) [View article](#) [PDF](#)

OPEN ACCESS

012044

Studies on Cultivation of Several Varieties of Onion (*Allium ascalonicum* L.) under Plastic Shade during Rainy Season in Jakarta

E Sugiartini, F R Eris, E Pancaningsih, O Nurviani and N Herawati

[+ Open abstract](#) [View article](#) [PDF](#)

OPEN ACCESS

012045

Diversity Assessment of Mango (*Mangifera* spp) Plant Collection of Cibinong Germplasm Garden Based on Leaves Morphology and RAPD Markers

Y G D Anggraheni and E S Mulyaningsih

[+ Open abstract](#) [View article](#) [PDF](#)

OPEN ACCESS

012046

Genetic diversity of Some Indonesian Local Rice Varieties based on Simple Sequence Repeat (SSR) marker related to Aromatic Genes

Susiyanti, Nopiasari, I Rohmawati, P Nursusilawati, Sjaifuddin and S Abdullah

[+ Open abstract](#) [View article](#) [PDF](#)

OPEN ACCESS

012047

Characterization of Sugar Plant Seeds (*Arenga pinnata* Merr.) from Several Locations in Banten Province and Their Growth Response to the Provision of Liquid Organic Fertilizers

AM Kartina, Susiyanti and W A Rusadi

[+ Open abstract](#) [View article](#) [PDF](#)

OPEN ACCESS

012048

The Symptomp Rate of Cocoa Pod Borer (*Conopomorpha cramerella*) due to the Combination of Several Concentrations of Neem (*Azadiracta indica*) Solution Given the Biosurfactant of Diethanolamide Olein Palm and Different Fruit Sizes

Nurmayulis, D Hastuti, F R Eris and Mujahidah

[+ Open abstract](#) [View article](#) [PDF](#)



OPEN ACCESS

012049

Combination of fish oil with rubber seed oil to the growth performance of catfish (*Clarias* sp.)

M B Syamsunarno, I D G Tambunan, A Munandar, Mustahal, A N Putra and M Herjayanto

[+ Open abstract](#) [View article](#) [PDF](#)

OPEN ACCESS

012050

Characteristics of Oil in Water (o/w) Type Lotions Incorporated with Kappa/Iota Carrageenan

D Fransiska, M Darmawan, E Sinurat, B B Sedayu, Y W Wardhana, Y Herdiana and G P Setiana

[+ Open abstract](#) [View article](#) [PDF](#)

OPEN ACCESS

012051

Study of The Effect of Light on The Length-Frequency and Catch Rate of Caspian Sea Sprat Conical Lift Net in Amirabad Fishing Ports

S Nodehshrifi, S Gorgin, S Y Paighambari, HA Khoshbavar-Rostami, M Babanezhad and H Fazli

[+ Open abstract](#) [View article](#) [PDF](#)

OPEN ACCESS

012052

Aquaculture in The World and Russia: State and Prospects

T E Marinchenko

[+ Open abstract](#) [View article](#) [PDF](#)

OPEN ACCESS

012053

Combination Effect of Solid Waste of *Gracilaria* Extraction and *Sargassum* Powder on Nitrogen Content of Bio Fertilizer

J Basmal, R Kusumawati, N Rahman and Z Hanafia

[+ Open abstract](#) [View article](#) [PDF](#)

OPEN ACCESS

012054

The Effect of Addition Glycerol Against Nori Characterization from *Gracilaria* sp and *Ulva* sp Seaweeds

E Sinurat, D Fransiska and Livia

[+ Open abstract](#) [View article](#) [PDF](#)

OPEN ACCESS

012055

Comparison of Gel Preparation Methods on Gel Strength Measurement of Carrageenan

Fateha, N Ulya, Asmanah and Agusman

[+ Open abstract](#) [View article](#) [PDF](#)

This site uses cookies. By continuing to use this site, you agree to our use of cookies. To find out more, see our Privacy and Cookies policy.



OPEN ACCESS

012056

Measurement of Fish Gelatin using Rotational Viscometer: An Alternative to Conventional Pipette Method

Agusman, Suryanti, Nurhayati, Murdinah and T Wahyuni

[+ Open abstract](#)[View article](#)[PDF](#)

OPEN ACCESS

012057

Effects of Water on Hydrophobization and Mechanical Properties of Thermoplastic Agar

Agusman, D Fransiska, Nurhayati, H E Irianto, P Priambudi, A H D Abdullah, R C Nissa, P P P Asri, N Masruchin, B B Sedayu *et al*[+ Open abstract](#)[View article](#)[PDF](#)

OPEN ACCESS

012058

The Effect of Adding *Bacillus* NP5 to Feed on Growth, Survival Rate, and Protection Against *Aeromonas hydrophila* of Catfish (*Clarias* sp.)

Mustahal, Sevia, M Herjayanto, M B Syamsunarno and A N Putra

[+ Open abstract](#)[View article](#)[PDF](#)

OPEN ACCESS

012059

Effect of *Trichoderma* Addition on *Sargassum* Organic Fertilizer

R Kusumawati, Nurhayati, H E Pangestu and J Basmal

[+ Open abstract](#)[View article](#)[PDF](#)

OPEN ACCESS

012060

Development of seed mass production of snakehead (*Channa striata*) in Indonesia

A Saputra, M B Syamsunarno and M T D Sunarno

[+ Open abstract](#)[View article](#)[PDF](#)

OPEN ACCESS

012061

Penetration of Microplastics (Polyethylene) to Several Organs of Nile Tilapia (*Oreochromis niloticus*)

D Aryani, M A Khalifa, M Herjayanto, E A Solahudin, E M Rizki, W Halwadiyah, H Istiqomah, S H Maharani, H Wahyudin and G Pratama

[+ Open abstract](#)[View article](#)[PDF](#)

OPEN ACCESS

012062

Economic Resilience of Fishermen Community During Covid-19 Pandemic

A Hamzah and H S Nurdin

This site uses cookies. By continuing to use this site you agree to our use of cookies. To find out more, see our [Privacy and Cookies policy](#).

[+ Open abstract](#)[View article](#)[PDF](#)

OPEN ACCESS

012063

The Development Design of Venturi Type Protein Skimmer for Mariculture Land Base System

A Susanto, M Herjayanto, Alimudin, W Budiaji, E Priyantono and N A Guna

[+ Open abstract](#)[View article](#)[PDF](#)

OPEN ACCESS

012064

Business Analysis of Fish Sauce from Goldspotted Anchovy (*Coilia dussumieri*) in Bagansiapiapi, Riau Province

K S Harahap, R S Mardiah and S A Ikhsan

[+ Open abstract](#)[View article](#)[PDF](#)

Food Sciences and Agricultural Product Technology

OPEN ACCESS

012065

Hazard analysis and critical control point of milkfish floss production as indigenous food from Banten province

W Nurtiana, Z Najah, D Anggraeni and N A Putri

[+ Open abstract](#)[View article](#)[PDF](#)

OPEN ACCESS

012066

The use of plant proteins in the technology of fermented dairy-free products

D Khrundin, V Ponomarev, E Yunusov and G Ezhkova

[+ Open abstract](#)[View article](#)[PDF](#)

OPEN ACCESS

012067

Development of functional beverages from herbs: aspect of nutrition, processing and safety

V Y Pamela, S Kusumasari and B Meindrawan

[+ Open abstract](#)[View article](#)[PDF](#)

OPEN ACCESS

012068

Quality of red tuna (*Yellowfin tuna*) fishball, white oyster mushroom (*Pleurotus ostreatus*) on different types of packaging and storage time

I K Budaraga, V Saibuma and L Hermalena

[+ Open abstract](#)[View article](#)[PDF](#)

OPEN ACCESS

012069

Analysis of glutamine synthetase activity from *Lactobacillus hilgardii* LMG 7934

This site uses cookies. By continuing to use this site you agree to our use of cookies. To find out more, see our Privacy and Cookies policy.



[+ Open abstract](#) [View article](#) [PDF](#)

OPEN ACCESS

012070

Design formula and product prototype of beverage made from tamarillo (*Solanum betaceum*) fruit and sappan wood (*Caesalpinia sappan*) using Kano method

C Angelica, O O Pangestu, J Kurniawan, B Meindrawan and D J C Hutabarat

[+ Open abstract](#) [View article](#) [PDF](#)

OPEN ACCESS

012071

Whole genome sequence data of *Lactobacillus fermentum* AG8, the producer of antibacterial peptides

A Pavlova, G Ozhegov, M N Yahia, N Gogoleva, E Shagimardanova, E Nikitina and A Kayumov

[+ Open abstract](#) [View article](#) [PDF](#)

OPEN ACCESS

012072

Potato starch as a component increasing the antioxidant potential of yogurt

E Nikitina

[+ Open abstract](#) [View article](#) [PDF](#)

OPEN ACCESS

012073

Effect of the formulation of fermented white corn flour and glutinous rice flour on the quality of instant cream soup powder

N A Pratiwi, R Rahmawati, R R Maulani, D Hunaefi, D Saputra and Tj Muhandri

[+ Open abstract](#) [View article](#) [PDF](#)

OPEN ACCESS

012074

Performance test and economic analyses of Semi Mechanic Corn Sheller

T Hidayat, Yahumri, Miswarti, H Iswadi, T Rahman, S Yuliasari and W Mikasari

[+ Open abstract](#) [View article](#) [PDF](#)

OPEN ACCESS

012075

Shrimp Paste Crackers as Potential Product Development for Small and Medium Enterprise (SMEs)

C Retnaningsih, B Bektir, O Ruenda and Meiliana

[+ Open abstract](#) [View article](#) [PDF](#)

Forestry/ Silviculture

This site uses cookies. By continuing to use this site you agree to our use of cookies. To find out more, see our Privacy and Cookies policy.

012076

Mitigation of Human-Orangutan Conflict in Orangutan Reintroduction Area at Suo-suo Village, Buffer Zone of Bukit Tigapuluh National Park

Maskulino, A H Harianja and W Kuswanda

[+ Open abstract](#) [View article](#) [PDF](#)

OPEN ACCESS

012077

Ethnopharmacological Properties of Essential Oils from Natural Forests in Northern Sumatra

A Aswandi and C R Kholibrina

[+ Open abstract](#) [View article](#) [PDF](#)

OPEN ACCESS

012078

The Consumer Preferences for New Sumatran Camphor Essential Oil-based Products using a Conjoint Analysis Approach

C R Kholibrina and A Aswandi

[+ Open abstract](#) [View article](#) [PDF](#)

OPEN ACCESS

012079

Gender Adaptation Strategy to The Impact of Forest and Land Fire in Kelampangan Village Peatland, Sebangau, Central Kalimantan

S Marlina, B S Lutt, A Usup and R Sunaryati

[+ Open abstract](#) [View article](#) [PDF](#)

JOURNAL LINKS

[Journal home](#)

[Information for organizers](#)

[Information for authors](#)

[Contact us](#)

[Reprint services from Curran Associates](#)

This site uses cookies. By continuing to use this site you agree to our use of cookies. To find out more, see our [Privacy and Cookies policy](#).





This site uses cookies. By continuing to use this site you agree to our use of cookies. To find out more, see our Privacy and Cookies policy.



PAPER • OPEN ACCESS

The Effect of Adding *Bacillus* NP5 to Feed on Growth, Survival Rate, and Protection Against *Aeromonas hydrophila* of Catfish (*Clarias* sp.)

To cite this article: Mustahal *et al* 2021 *IOP Conf. Ser.: Earth Environ. Sci.* **715** 012058

View the [article online](#) for updates and enhancements.



240th ECS Meeting ORLANDO, FL

Orange County Convention Center **Oct 10-14, 2021**

Abstract submission deadline extended: April 23rd

SUBMIT NOW

The Effect of Adding *Bacillus* NP5 to Feed on Growth, Survival Rate, and Protection Against *Aeromonas hydrophila* of Catfish (*Clarias* sp.)

Mustahal^{1,2}, Sevia¹, M Herjayanto¹, M B Syamsunarno¹, A N Putra^{1,2*}

¹Department of Fisheries, Faculty of Agriculture, University of Sultan Ageng Tirtayasa Jl. Raya Jakarta Km. 04 Pakupatan, Serang City, Banten Province, Indonesia, 42121

²Indonesia-Center of Excellence for Food Security (Local Food Innovation), University of Sultan Ageng Tirtayasa. Jl. Raya Jakarta Km. 04 Pakupatan, Serang City, Banten Province, Indonesia, 42121

*E-mail: putra.achmadnp@untirta.ac.id

Abstract. Probiotics are useful organisms in preventing the spread of disease in aquaculture. Therefore this study aims to evaluate the effect of administering *Bacillus* NP5 on the growth, survival rate, and histology of catfish with *Aeromonas hydrophila* infection. To achieve this, catfish (7.75 ± 0.02 g) were reared for 45 days with a density of 20 per tank. Furthermore, the study consisted of 4 treatments and 3 replications, namely K+: 0% *Bacillus* NP5+0.1 mL A. *hydrophila* injection, K-: 0% *Bacillus* NP5 + without A. *hydrophila* injection, A: 0.3% *Bacillus* NP5, and B: 0.8% *Bacillus* NP5. The results showed that the addition of probiotics significantly increased the growth and survival rate of catfish ($P < 0.05$) compared to K+. The higher value of specific growth rate was found in treatments A and B (0.22 ± 0.03 and $0.23 \pm 0.03\%$ day⁻¹, respectively) and the lowest in K+ ($0.14 \pm 0.03\%$ day⁻¹). Also, the tissue damage in K+ was higher than in the probiotic treatment. Besides, hyperplasia, congestion, and secondary lamella fusion in the gill tissue were found in the K+, while other treatments were found only in hyperplasia. Melanomacrophages occurred in catfish kidney tissue for all treatments, however, hydropic degeneration was found in the control treatment. The addition of *Bacillus* NP5 in feed resulted in higher growth, survival, and tissue damage compared to K+. Also, the addition of 0.8% *Bacillus* NP5 resulted in less catfish tissue damage.

Keywords: *Bacillus* NP5, catfish, histology, probiotic.

1. Introduction

Catfish is a freshwater commodity with high economic value and is widely cultivated in Indonesia. However, the density of high in catfish culture has led to a decrease in the environmental quality of the rearing media and an increase in disease infection [1]. One of the most common diseases in catfish farming, especially in the intensive culture systems is Motile *Aeromonas* Septicemia (MAS) caused by the bacterium *Aeromonas hydrophila*. The clinical symptoms of this bacterium disease are lesions and necrosis of the skin with various sizes, reddish ulcers, hemorrhage, and inflammation of the stomach



lining and fins [2]. MAS also attacks the fish digestive tract, which results in reduced feed efficiency and growth decrease [3]. The use of antibiotics to prevent diseases in aquaculture has long been abandoned because it causes bacterial resistance to antibiotics and leaves residues in the fish environment [4, 5].

Probiotics is an approach to prevent the spread of the pathogen in aquaculture [6]. These are live microbes that benefit the host by stimulating the growth of the microbial population in the digestive tract, increasing feed digestibility, enhancing the immune response to pathogen infection, and improving environmental quality [7]. *Bacillus* NP5 is a probiotic isolated from the digestive tract of tilapia [8], which has a positive effect on increasing the growth performance of its host [9]. Furthermore, the administration of *Bacillus* NP5 has been investigated to improve the immune response of tilapia [10, 11], white shrimp [12], Common carp [13], and *Pangasius* sp. [14]. However, no studies have evaluated the effect of its addition on the growth and tissue histology of catfish. Therefore, this study aims to evaluate the effect of the addition of *Bacillus* NP5 as a probiotic on growth, survival rate, and tissue histology of catfish infected by *A. hydrophila*.

2. Material and Methods

2.1 Preparation of Feed

The probiotics were inoculated into 25 mL of *Tryptic Soy Broth* (TSB) media and incubated for 24 hours with a water bath shaker at 29 °C. Subsequently, they were harvested by centrifugation at a speed of 6000 rpm for 30 minutes and diluted from a density of 10¹¹ CFU/mL to 10⁸ CFU/mL. Meanwhile, commercial feed with a protein content of 33.9% was mixed with *Bacillus* NP5 and 2% egg yolk according to the method described by [15]. It was dried for 15 minutes to reduce moisture and then the feed was ready to be fed to the fish.

2.2 Catfish Rearing and Growth Parameters

Twelve round fiberglass tanks with a volume of 60 L and a diameter of 50 cm were used for catfish rearing. The tank was sterilized using freshwater and 30 ppm chlorine for 24 hours. Furthermore, catfish with an average weight of 77.75±0.02 g were reared at a density of 20 fish/35 L and were fasted for 24 hours to eliminate the effect of residual feed. Also, as much as 10% of the water was changed every morning. Feeding was carried out using the satiation method with a frequency of three times daily for 45 days. A completely randomized design was adopted, which consist of four treatments and three replications, namely: K+ (positive control with 0.1 mL *A. hydrophila* injection), K- (negative control without *A. hydrophila* injection), A (0.3% *Bacillus* NP5 with 0.1 mL *A. hydrophila* injection), and B (0.8% *Bacillus* NP5 with 0.1 mL *A. hydrophila* injection).

At the end of the experiment (45 days), the weight and number of fish were calculated to determine their growth and survival rate. The growth parameters in this study consisted of specific growth rate (SGR), feed efficiency (FE), and survival rate (SR), which were in line with [17].

$$\text{SGR (\% day}^{-1}\text{)} = \frac{\text{Ln } W_t - \text{Ln } W_o}{45 \text{ days}} \times 100\% \quad (1)$$

$$\text{FE (\%)} = \frac{(W_t + W_d) - W_o}{I} \times 100\% \quad (2)$$

$$\text{SR (\%)} = \frac{F_t}{F_o} \times 100\% \quad (3)$$

Note:

W₀ = initial biomass of catfish, W_t = final biomass of catfish, W_d = biomass of dead catfish, I = feed intake, F_t = final number of catfish, F_o = initial number of catfish.

2.3 *A. Hydrophila* Injection and Histopathology

After 20 days, catfish (except for treatment K-) were injected intramuscularly with *A. hydrophila* using a syringe. The dose is 0.1 mL/fish with a density of 10⁶ CFU/mL according to [1]. At the end of the experiment, 5 catfish from each treatment were taken for histological analysis according to the method

described by [18]. This was performed on the catfish gill, liver, and kidney at Histopathology Laboratorium, Station for Investigation of Fish Health and Environment, (SIFHE) Serang, Indonesia.

2.4 Statistical Analysis

The histology of gill, liver, and kidney tissue of catfish was analyzed descriptively and the growth data were analyzed using ANOVA (analysis of variance). Furthermore, the Duncan multiple range tests were adopted to analyze the different data [19]

3. Result and Discussion

3.1 Growth and Survival Rate of Catfish

Probiotics do not have a specific mechanism of action in their host body. However, it maintains a balance of microorganism populations in the digestive tract of the host [20]. The effect of probiotics on the growth and survival rate of catfish is shown in Table 1.

Table 1. Effect of the addition of probiotics on growth and survival rate of catfish*

| Parameters** | Probiotic treatments*** | | | |
|----------------------------|-------------------------|-------------------------|-------------------------|-------------------------|
| | K+ | K- | A | B |
| SGR (% day ⁻¹) | 0.14±0.03 ^a | 0.24±0.01 ^b | 0.22±0.03 ^b | 0,23±0,03 ^b |
| FE (%) | 40.79±7.78 | 53.72±16.86 | 55.20±17.31 | 54,43±13,23 |
| SR (%) | 56.67±7.63 ^a | 88.33±5.77 ^b | 86.67±2.88 ^b | 83,33±2,88 ^b |

*The same superscript letter on the same line indicates an insignificant value ($P > 0.05$).

**SGR (specific growth rate), FE (feed efficiency), SR (survival rate).

***K+ (positive control with *A. hydrophila* injection), K- (negative control without *A. hydrophila* injection), A (0.3% *Bacillus* NP5 with *A. hydrophila* injection), B (0.8% *Bacillus* NP5 with *A. hydrophila* injection).

The result shows that there is no significant value for the FE parameter between all treatments. Furthermore, the SGR and SR values in probiotic and K- treatments were higher than those of K+ ($P < 0.05$), but there is no significant difference for SGR and SR values between K-, A, and B treatments. Also, the highest SGR was recorded at K- (0.24 ± 0.03 % day⁻¹), followed by B (0.23 ± 0.03 % day⁻¹), A (0.22 ± 0.03 % day⁻¹) and the smallest value was K+ (0.14 ± 0.03 % day⁻¹). Besides, the increased growth in probiotic treatment might be due to increased enzyme activity in the digestive tract of catfish. Hauville [21] reported that the addition of probiotics to feed increases the normal microflora population which was helped in the process of digestion. Also, several studies have shown that the applications of *Bacillus* NP5 as probiotics in the feed increased growth due to the improved activity of enzymes in the digestive tract [9, 22]. Similar results were found by [23] in white shrimp and [24] in snakehead.

The survival rate is a measure of the success of a population in percentage at a given time during fish culture. After *A. hydrophila* infection, the survival rate in probiotic treatments showed a better result than K+. This was an indication that the addition of *Bacillus* NP5 as a probiotic was able to suppress *A. hydrophila* infection. Similarly, [10] reported that the survival rate of tilapia with the administration of *Bacillus* NP5 and infected *streptococcus agalactiae* is 80.56% and 13.89 in the positive control treatment.

3.2 Histology of Catfish Tissue

The histology of catfish gill tissue after *A. hydrophila* infection is shown in figure 1. Furthermore, hyperplasia, congestion, and fusion of lamella were found in K+. Also, hyperplasia was found in all treatments except K- and lamella fusion was found in K+, K-, and A. The hydropic degeneration in liver tissue (Figure 2) is found in all treatments and congestion is found in K+ and A. Besides, lipid differentiation was found in K+. Melanomacrophages occur in catfish kidney tissue in all treatments (Figure 3). However, hydropic degeneration was found in K+.

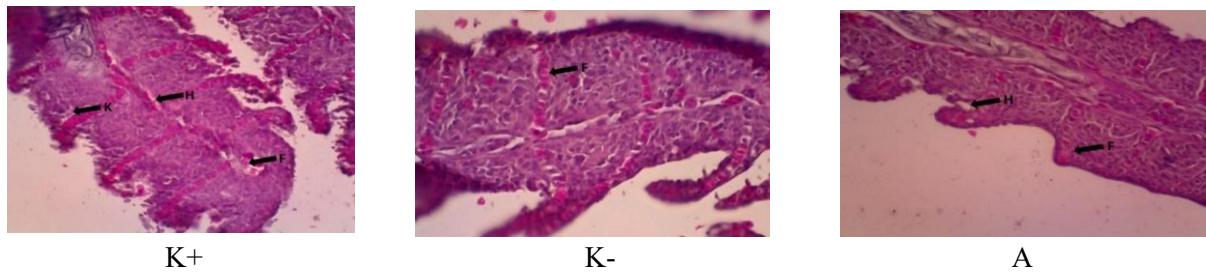


Figure 1. The gill histology of catfish after *A. hydrophila* infection with 400× magnification. K: congestion, H: hyperplasia, F: lamella fusion. K+ (positive control with *A. hydrophila* injection), K- (negative control without *A. hydrophila* injection), A (0.3% *Bacillus* NP5 with *A. hydrophila* injection), B (0.8% *Bacillus* NP5 with *A. hydrophila* injection).

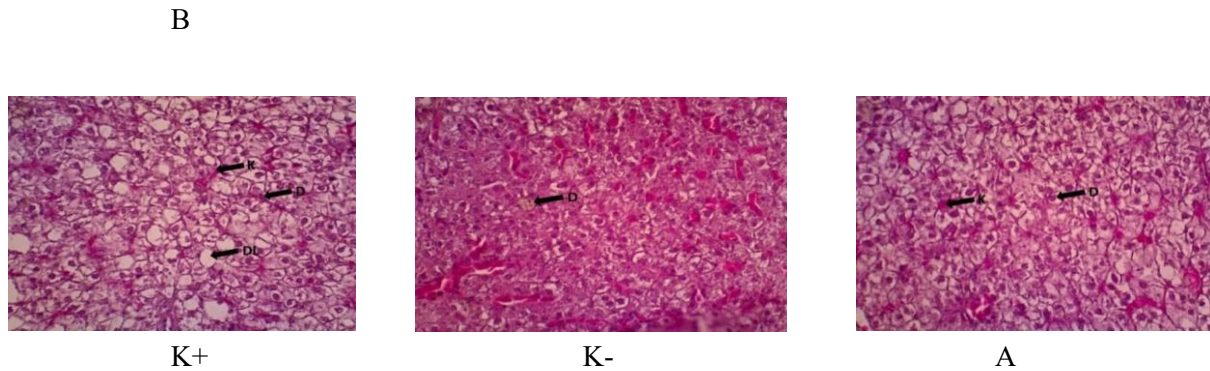
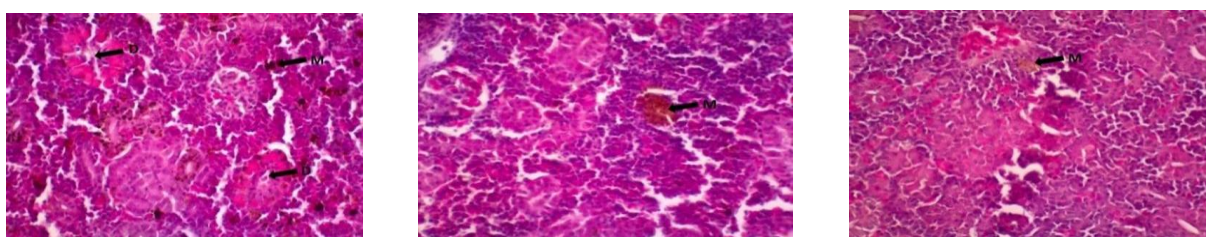


Figure 2. The liver of catfish after *A. hydrophila* infection with 400× magnification. K: congestion, D: hydropic degeneration, DL: lipid differentiation. K+ (positive control with *A. hydrophila* injection), K- (negative control without *A. hydrophila* injection), A (0.3% *Bacillus* NP5 with *A. hydrophila* injection), B (0.8% *Bacillus* NP5 with *A. hydrophila* injection).

Hyperplasia is the most common histopathological change in gills. Meanwhile, the congestion found in K+ is believed to be caused by *A. hydrophila* infection. This result was in line with [25] that congestion was a state of increased blood volumes in the vessels that accumulate in a part of the body due to physical trauma caused by a pathogen or circulatory system disorders. Furthermore, congestion was found in the catfish livers of K+ and lipid degeneration of the liver was characterized by swollen and vacuole tissue. This results in loss of lipid metabolism in fish [26]. In catfish kidneys, the damage was found in the form of melanomacrophages, which are characterized by the presence of inflamed parts and macrophages. Furthermore, tissue damage in probiotic treatment was smaller than K+, which is caused by the role of probiotics in increasing Immune response. A similar result was found by [10] in tilapia and [27] in African catfish.



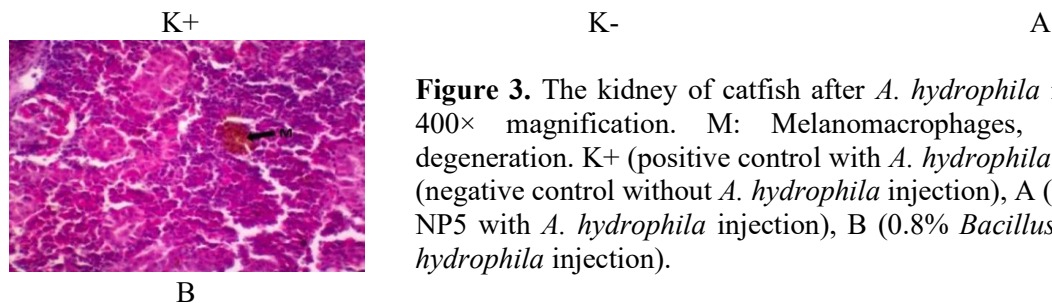


Figure 3. The kidney of catfish after *A. hydrophila* infection with 400× magnification. M: Melanomacrophages, D: hydropic degeneration. K+ (positive control with *A. hydrophila* injection), K- (negative control without *A. hydrophila* injection), A (0.3% *Bacillus* NP5 with *A. hydrophila* injection), B (0.8% *Bacillus* NP5 with *A. hydrophila* injection).

4. Conclusions

Conclusively, the addition of *Bacillus* NP5 as a probiotic increased the growth and survival rate of catfish after *A. hydrophila* infection. Furthermore, tissue damage in probiotic treatment was smaller than K+, besides, there was no significant difference between 0.3% and 0.8% *Bacillus* NP5 for all parameters.

Acknowledgments

The authors are grateful to LPPM-UNTIRTA for funding this research with the scheme Hibah Penelitian Terapan Internal 2020.

References

- [1] Putra AN, Syamsunarno MB, Ningrum W, Jumyanah, Mustahal. 2020. Effect of the administration of probiotik *Bacillus* NP5 in the rearing media on water quality, growth, and disease resistance of African catfish (*Clarias gariepinus*). *Biodiversitas* 21(6) 2566-2575.
- [2] Angka SL. 2005. Kajian Penyakit *Motile Aeromonas Septicemia* (MAS) pada Ikan Lele Dumbo (*Clarias* sp.) Patologi, Pencegahan dan Pengobatannya dengan Fitofarmaka [DISERTASI]. Bogor: Sekolah Pascasarjana, Institut Pertanian Bogor. 129 hal.
- [3] Ardita N, Budiharjo A, Sari SLA. 2015. Pertumbuhan dan Rasio Konversi Pakan Ikan Nila (*Oreochromis niloticus*) dengan Penambahan Prebiotik. *Jurnal Bioteknologi* 12(1) 16-21.
- [4] Cabello FC. 2006. Heavy use of prophylactic antibiotics in aquaculture: a growing problem for human and animal health and for the environment. *Environmental Microbiology* 8(7) 1137-1144.
- [5] Akinbowale OL, Peng H, Barton MD. 2006. Antimicrobial resistance in bacteria isolated from aquaculture source in Australia. *Journal of Applied Microbiology* 100(5) 1103-1113.
- [6] Adeoye AA, Yomla R, Torren AJ, Rodiles A, Merrifield DL., Davies SJ. 2016. Combined effects of exogenous enzymes and probiotic on Nile tilapia (*Oreochromis niloticus*) growth, intestinal morphology and microbiome. *Aquaculture* 463 61-70.
- [7] Verschuere L, Rombaut G, Sorgeloos P, Verstraete W. 2000. Probiotic Bacteria as Biological Control Agents in Aquaculture. *Journal Microbiological and Molecular Biology Review*. 64(4) 655-671.
- [8] Putra AN & Widanarni. 2015. Screening of amylolytic bacteria as candidates of probiotics in tilapia *Oreochromis* sp.. *Research Journal of Microbiology* 10 1-13.
- [9] Putra AN, Mustahal, Syamsunarno MB. 2020. Effects of dietary probiotic *Bacillus* NP5 on the growth performances of catfish (*Clarias* sp.). *Biotropia* 27(1) 51-59.
- [10] Tanbiyaskur, Widanarni, Lusiastuti AM. 2015. Administration of *Bacillus* NP5 and Oligosaccharide to enhance the immune response in tilapia *Oreochromis*. *International Journal of Sciences Basic and Applied Research* 20(2) 304-315.
- [11] Agung AL, Widanarni, Yuhana M. 2015. Application of micro-encapsulated probiotic *Bacillus*

- NP5 and prebiotic mannan oligosaccharide (MOS) to prevent streptococcosis on tilapia *Oreochromis niloticus*. *Research Journal of Microbiology* 10 571–581.
- [12] Widanarni, Yuhana M, Muhamad A. 2014. *Bacillus* NP5 improves growth performance and resistance against infectious myonecrosis virus in white shrimp *Litopenaeus vannamei*. *Ilmu Kelautan* 19 211–218.
- [13] Djauhari R, Widanarni, Sukenda, Suprayudi MA, Zairin M. 2016. Characterization of *Bacillus* sp. NP5 and its application as probiotic for common carp (*Cyprinus carpio*). *Research Journal of Microbiology* 11(4-5): 101-111.
- [14] Tamamdisturi R, Widanarni, Yuhana M. 2016. Administration of microencapsulated probiotic *Bacillus* sp. NP5 and prebiotic Mannan Oligosaccharide for prevent of *Aeromonas hydrophila* infection on *Pangasianodon hypophthalmus*. *Journal of Fisheries and Aquatic Science*. 11(1) 67-76.
- [15] Putra AN, Utomo NBP, Widanarni. 2015. Growth Performance of Tilapia (*Oreochromis niloticus*) Fed with Probiotic, Prebiotic and Synbiotic in Diet. *Pakistan Journal of Nutrition* 14(5) 263-268.
- [16] Putra AN & Widanarni. 2015. Screening of amylolytic bacteria as candidates of probiotics in tilapia *Oreochromis* sp.. *Research Journal of Microbiology* 10 1–13.
- [17] Akinwole AO & Faturoti EO. 2007. Biological performance of African Catfish (*Clarias gariepinus*) cultures in recirculating system in Ibadan. *Aquacultural Engineering*. 36 18-23.
- [18] Wada S, Atami H, Kurata O, Hatai K, Kasuya K, Watanabe Y, Fukuda H. 2011. Histopathology of gill lesions of ayu *Plecoglossus altivelis* clinically diagnosed with 'Boke' Disease. *Fish Pathology* 46 (2): 59-61.
- [19] Duncan DB. 1955. Multiple range and multiple 'F' test. *Biometrics* 11 1-42.
- [20] Dawood, M., A., O., & Koshio, S. 2016. Recent advances in the role probiotics and prebiotics in carp aquaculture: A review. *Aquaculture*, 454, 243-251
- [21] Hauville MR, Zambonino-Infante JL, Bell JG, Migaud H, Main KL. 2015. Effects of mix of *Bacillus* sp. as a potential probiotic for Florida pompano, common snook and red drum larvae performances and digestive enzyme activities. *Aquaculture Nutrition* 22(1) 51-60.
- [22] Putra AN and Romdhonah Y. 2019. Effects of dietary *Bacillus* NP5 and sweet potato extract on growth and digestive enzyme activity of dumbo catfish, *Clarias* sp.. *Jurnal Akuakultur Indonesia* 18(1): 80-88.
- [23] Zubaidah A, Yuhana M, Widanarni. 2015. Encapsulated Synbiotik Dietary Supplementation at Diferent Dosaeges to Prevent Vibriosis in White Shrimp *Litopenaeus Vannamei*. *Jurnal of Biosciences*. 22 : 163-168.
- [24] Munir MB, Hashim R, Chai YH, Marsh TL, Nor, SAM. 2016. Dietary prebiotic and probiotics influence growth performance, nutrient digestibility and the expression of immune regulatory genes in snakehead (*Channa striata*) fingerlings. *Aquaculture* 460 59-68.
- [25] Hadi AA & Alwan SF. 2012. Histopathological Changes in Gills, Liver and Kidney of Freshwater Fish, *Tilapia zillii*, Exposed to Aluminium. *Int. J. Of Pharm and Life Sci*. 3(11) 2071-2081.
- [26] Kalaiyarasi T, Jayakumar N, Jawahar P, Ahilan B dan Subburaj A. 2017. Histological Changes in The Gill and Liver of Marine Spotted Catfish, *Arius maculatus* from Sewage Disposal Site, Therapuram off Thothupudi Southeast Coast of India. *Journal of Entomology and Zoology Studies* 5(5) 1710-1715.
- [27] Ulkhaq MF, Widanarni dan Lusiastuti AM. 2014. Aplikasi probiotik *Bacillus* untuk pencegahan infeksi *Aeromonas hydrophilla* pada ikan lele. *Jurnal Akuakultur Indonesia*. 13(2) 105-114.