

# Paper 21-Aziz Abdul

*by Aziz Abdul*

---

**Submission date:** 03-Aug-2021 11:24PM (UTC+0700)

**Submission ID:** 1627371036

**File name:** BEST\_2021\_paper\_21\_1.pdf (763.69K)

**Word count:** 2737

**Character count:** 12891

# Effect of Phase Transformation on Surface Roughening Behavior in Austenitic Thin Metal Foils

Abdul Aziz <sup>(1)</sup>, Ming Yang <sup>(1)</sup>, Tetsuhide Shimizu <sup>(1)</sup>, Tsuyoshi Furushima <sup>(2)</sup>

1. Tokyo Metropolitan University, Hino Campus, 6-6-Asahigaoka, Hino-shi, Tokyo Japan, 191-0065

2. Institute of Industrial Science, The University of Tokyo, 4-6-1, Meguro City, Tokyo Japan, 153-8505

## Abstract

The effect of grain misorientation (GMO) and martensitic transformation (MPT) to surface roughening in SUS 316 and 304 thin metal foils were studied through uniaxial tensile stress state, repeated five times in 5.0% strain level for one time strain and 25% strain for the total of strain level. After that, an Scanning Electron Microscope-Electron Backscatter Diffraction (SEM-EBSD) analysis applied to 304 and 316 thin metal foils. The result showed that in SUS 304 and SUS 316 thin metal foil, surface roughening increase proportional both in fine grain, with grain size (Dg) 1.5 $\mu$ m and coarse grain, with grain size (Dg) 9.0 $\mu$ m. The surface roughening in coarse Dg, increased higher than in fine Dg. The grain strength in SUS 304 is more inhomogeneous compared to SUS 316 that shown by SEM-EBSD results and as a result, increasing ratio of the surface roughness (Ra) is higher in fine grain and coarse grain of SUS 304 compared to SUS 316. The inhomogeneity of the grain strength in SUS 304 thin metal foil is higher than SUS 316 thin metal foil as shown by SEM-EBSD result. Furthermore, the increased surface roughness in SUS 304 is higher than SUS 316 thin metal foil both in fine grain and coarse grain.

Keywords : Martensitic Phase Transformation (MPT), Grain Misorientation (GMO), Grain Size (Dg).

## 1. Introduction

The wide useful of stainless steel such as for biomedical, electronic, electrical power, nuclear and food industry attract high demand of micro forming industry product in the recent decades. When uniaxial tensile test applied to stainless steel, over the yield point, martensitic phase transformation (MPT) occurred. After plastic deformation to stainless steel, not only MPT increase, but also martensitic volume fraction (Mf) increase [1–3]. MPT increase the strength of stainless steel thin foil but decrease the toughness [4,5]. Xue et al. [1] and Qin et al. [6] found that the plastic deformation affect to Mf in stainless steel strip. Tomita et al. [7] found that Plastic deformation to stainless steel affect to shear band intersection and nucleation of MPT. Zhan et al [8] Used face center cubic (FCC) materials in studying the evolution of surface roughness. It need to study surface roughening beside FCC structure. Kengo Yoshida et al. [9] found that Dg is an important factor that affect to surface roughening. It need to investigate surface roughness with Dg below 10  $\mu$ m in thin metal foils. Shimizu et al. [10] concluded that grain deformation affects surface roughness behavior. grain plastic deformation affect to surface roughness behavior. beside that, the increase of surface roughness in sheet metal depend on single grain deformation. The different plastic deformation in a unit grain increases the surface roughness. Furushima et al, [11] Weak grain deformation affect to surface roughening. Aziz et al [12] concluded that the MPT affect to surface roughness behavior in thin metal foils of SUS 304 with various Dg lower than 10  $\mu$ m. When the MPT is lower, the surface roughness increase higher. Surface roughness increase proportional in

coarse grain (Dg = 9 $\mu$ m) and increase not proportional in fine grain (Dg 3 $\mu$ m and Dg 1.5 $\mu$ m) of SUS 304 thin metal foils. Surface roughness affected by grain misorientation in fine grain with Dg 1.5  $\mu$ m of SUS 316 thin metal foil. Shuro et al (13) concluded that annealing in austenitic stainless steel increase  $\alpha'$  phase in grain boundary of stainless steel that increase the strength of stainless steel. The increase in strength of stainless steel depend on the existence of  $\alpha'$  phase in grain boundary that produced by annealing treatment in materials. The increase of  $\alpha'$  affect to an increasing strength of material. It need experiment of surface roughness behavior in SUS 316 thin metal foils with grain size over lower than 10  $\mu$ m. It need study in surface roughening behavior deeply in stainless steel thin metal foils. In this study, we attempt to clarify the surface roughness mechanism in stainless steel with Dg below 10 $\mu$ m and the correlation of the MPT and grain misorientation to surface roughness behavior. In this study we attempt to clarify effect of MPT and GMO of stainless steel thin metal foil to surface roughness behavior in thin metal foils with Dg below than 10 $\mu$ m. in order to achieve that uniaxial tensile test applied, surface roughness measured and analyzed for every step of tensile test until five steps. Then, thin metal foils analyzed using SEM-EBSD.

## 2. Materials and Methode

Stainless steel thin metal foil of SUS 304 and SUS 316 with Dg 9.0  $\mu$ m and 1.5  $\mu$ m rolled into a 0.1 mm thickness. The reason on using SUS 304 and SUS 316 thin metal foils that SUS 304 has more complicated

ph<sub>1</sub> than SUS 316 thin metal foil. The microstructure in SUS 316 and SUS 304 thin metal foil affect to the occurrence of the MPT and grain misorientation (GMO). MPT and GMO may<sub>1</sub> have great effect to surface roughne<sub>1</sub> behavior of SUS 304 and SUS 316 thin metal foil. The thin metal foils were provided by Komatsu Seiki Koshakuso C<sub>1</sub>. Ltd., Suwa City, Nagano, Japan. The samples of<sub>1</sub> in metal foils SUS 304 and SUS 316 provided by Komatsu Seiki Koshakuso, Co.Ltd., Suwa City, Nagano perfec<sub>1</sub>ture, Japan. In order to remove residual stress, thin foil materials of SUS 304 and SUS 316 were annealed at 400°C for one hour. Then, initial surface roughness behavior measured, after that uniaxial tensile test conducted to thin metal foils at first step of tensile test with 5,0% strain level, after that surface roughness measured and analyzed. This experiment repeated until five times. Before uniaxial tensile test, thin metal foils were cleaned using electric vibration for 30 minutes.

<sub>1</sub> The surface roughening behavior of SUS 304 and SUS<sub>1</sub> 316 with various sizes of Dg were investigated. The samples are subjected to the uniaxial tensile stress state for five steps using commercial tensile test machine, Shimadzu Tensile Machine, with generic name AGX-50KNVD, capac<sub>1</sub> used is 5 KN, produced by Shimadzu Corp., Japan, with constant strain level. After the samples are subjected to the uniaxial tensile stress state, the surface roughness is measured using a confocal laser microscope (OLS-5000, produced by Olympus, Co., Japan). The microstructure of the materials after tensile test are analyzed by SEM-EBSD.

### 3.Result and Discussion

Uniaxial tensile test subjected to thin metal foils until thin metal foils fractured. After that, we obtain stress strain curve as shown in Fig. 1. The materilas with fine Dg has higher tensile strength and lower ductility. SUS 304 thin metal foils has higer ductility ar<sub>1</sub> higher tensile strength than SUS 316 thin metal foil as shown in Fig.1. The increase of surface roughness with different materials and the same Dg shown in Fig.2 and 3. Surface roughness inc<sub>1</sub>ase proportional both in fine Dg and caorse Dg of SUS 304 and SUS 316 thin metal foils. Surface roug<sub>2</sub>ess increase higher in coarse Dg than fine Dg both in SUS 304 and SUS 316 thin metal foils. Surface roughness in SUS 304 increase higher than SUS 316 in the same Dg as shown in Fig.2 and Fig.3, because SUS 304 more ductile than SUS 316 as shown in Fig.1.

The GMO and MPT analysed by the SEM-EBSD are shown in Fig. 4 and 5, respectively. Fig.4 is the analysis of phase mapping that consists of MPT and austenite phase. The red one of the picture is austenite and the green one of the picture is martensite. Kernel average misorientation (KAM) mapping that consists no GMO by the blue color, GMO indicated by the green color, red

color as shown in Fig.5. GMO showed by red color equals to 5°. GMO showed by green color equals to 2°. G<sub>1</sub>D showed by blue color equal to 0°. The KAM map is obtained from the calculation of the misorientation between all the surrounding and the centre po<sub>1</sub> in the kernel are calculated and averaged (12). In the SUS 304 thin metal foil both in coarse and fine grain, The occurent of MPT and GMO are shown in Fig.4 and Fig 5. In SUS 316 thin metal foil, MPT not occur both in coarse and fine grain as shown in Fig.4. in SUS 316 thin metal foil, GMO occurs in both in low and coarse grain as shown in Fig 5.

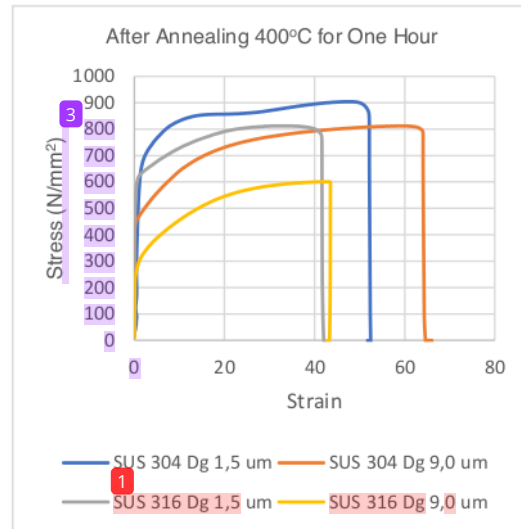


Figure 1. Material Deformation Behavior

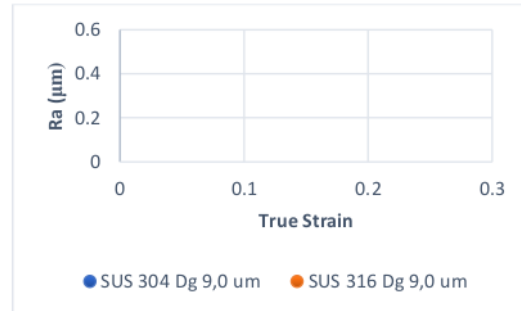


Figure 2. Surface Roughness in Dg 9.0µm

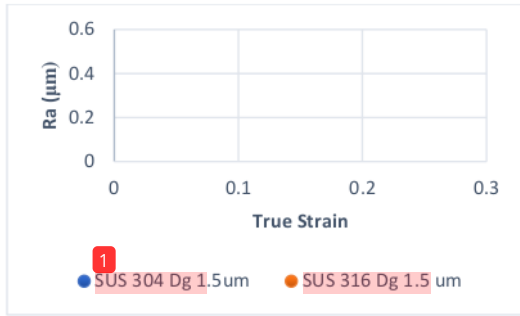
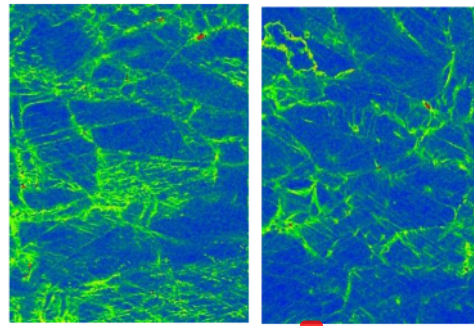
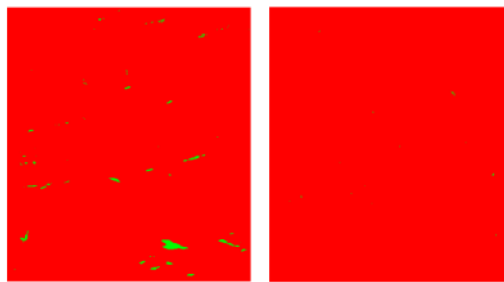


Figure 3. Surface Roughness in Dg.1.5um

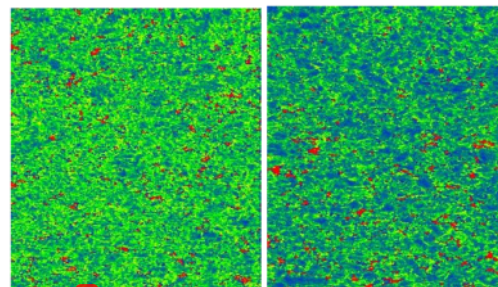


GMO SUS 304 Dg 9,0  $\mu\text{m}$  GM SUS 316 Dg 9,0  $\mu\text{m}$



SUS 304 Dg 9,0 $\mu\text{m}$

SUS 316 Dg 9,0 $\mu\text{m}$

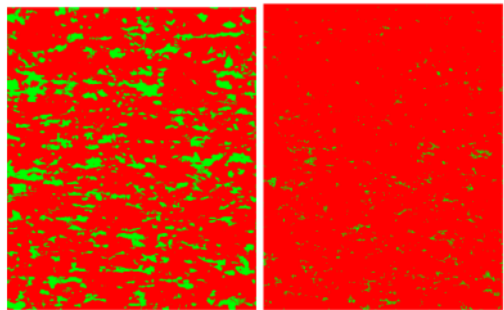


GMO SUS 304 Dg 1,5  $\mu\text{m}$

GM SUS 316 Dg 1,5  $\mu\text{m}$

- = 2° Misorientation
- = 5° Misorientation
- = No Misorientation

Figure 5. EBSD KAM Mapping Dg 1,5  $\mu\text{m}$  at 5%



SUS 304 Dg 1,5 $\mu\text{m}$

SUS 316 Dg 1,5 $\mu\text{m}$

- = MPT
- = Austenite Phase

Figure 4. EBSD Phase Mapping Dg 1.5  $\mu\text{m}$  at 5%

The higher grain strength in SUS 304 than SUS 304 thin metal foil caused by higher MPT and GMO in SUS 304 in comparison with SUS 316 thin metal foils. The GMO in SUS 304 is nearly equal with SUS 316 thin metal foils, but, the MPT in SUS 304 much higher than SUS 316 thin foil. Grain deformation become more difficult since grain strength become higher and more uniform. Non uniformity of grain strength in SUS 304 thin foil affects to more inhomogeneous grain. Non uniformity of grain strength is similar with inhomogeneous grain strength. MPT is the dominant factor that affect to the grain strength in SUS 304 thin foil. The inhomogeneous grain strength in coarse grain is higher than fine grain in SUS 304 thin metal foil. The more inhomogeneous of grain strength affect to higher surface roughness in thin metal foil of SUS 304 and SUS 316 after plastic deformation with the same strain level. In coarse grain of SUS 316, the grain strength only affected by low volume of GMO. In fine grain of SUS 316, the grain strength affected by high volume of GMO and very small of MPT. The SUS 316 thin metal foil consist of no MPT in coarse grain and very small MPT in fine grain. the surface roughness in

SUS 304 is higher than SUS 316, because the inhomogeneous grain strength in SUS 316 is lower than SUS 304. The SUS 316 inhomogeneity phase mapping is shown in Fig.4 and inhomogeneity GMO mapping in Fig.5, but surface roughness in SUS 304 is higher than SUS 316 coarse grain. It means that inhomogeneity of grain strength affected by MPT is stronger than inhomogeneity of grain strength affected by GMO.

On the other hand, GMO in SUS 304 fine grain is the same with SUS 316 that affect to the strength and ductility of SUS 304 and 316 thin foils. GMO spread homogenous both in SUS 304 and 316 thin foils. The strength of SUS 304 affected by the high MPT and high GMO. The strength of SUS 316 affected only by high GMO. The existing of MPT and GMO in SUS 304 affect to higher strength compared to SUS 316. The lower ductility in SUS 316 compared to SUS 304 caused by the existing of  $\alpha'$  phase in SUS 316 and SUS 304 after annealing in 400°C for one hour. The lower ductility in SUS 316 compared to SUS 304 thin foils also caused by lower toughness of SUS 316 thin foil compared to SUS 304 thin foil (12,13). Even grain strength of SUS 304 is higher compared to grain strength of SUS 316 fine grain, but they have surface roughness of SUS 304 is higher than SUS 316. The reason is the grain deformation mechanism in which each grain rotates with the higher angle of SUS 304 than SUS 316 thin metal foils from the normal direction (10).

It is found that the effect of MPT and GMO on surface roughness (Ra) are different for different Dg. Ra affected by inhomogeneous grain deformation. The inhomogeneous grain deformation affected by the quantity of MPT, GMO and Dg. Three kinds of influential factors have an important role on clarifying the Ra mechanism in this research. The inhomogeneous grain in the higher Dg will affect to higher Ra. The homogeneous grain in the lower Dg will affect to lower Ra.

#### 4. Conclusion

- In SUS 304 thin metal foil, the Ra increases higher for coarse grain than fine grain, because of the lower slip band interaction in coarse grain that affect to lower MPT in coarse grain, compared to fine grain.
- In SUS 316 thin metal foil, the Ra increase higher for coarse grain compared to fine grain, because of GMO lower in coarse grain compared to fine grain that affect to more inhomogeneous grain strength in coarse grain compared to fine grain.
- Surface roughness in SUS 304 thin metal foil increase higher than SUS 316 thin metal foil in the same Dg both in fine grain and coarse grain. The effect of MPT to Ra is higher than GMO in stainless steel.

#### 5. References

- 1) Xue, Z.Y.; Zhou, S.; Wei, X.C. Influence of pre-transformed martensite on work-hardening behavior of SUS 304 metastable austenitic stainless steel. *J. Iron Steel Res. Int.* 2010, 17, 51–55.
- 2) Engel, U.; Eckstein, R. Microforming—From basic research to its realization. *J. Mater. Process. Technol.* 2002, 125–126, 35–44.
- 3) Furushima, T.; Manabe, K. Experimental and Numerical Study on Deformation Behavior in Dieless Drawing Process of Superplastic Microtubes. *J. Mater. Process. Technol.* 2007, 191, 59–63.
- 4) Milad, M.; Zreiba, N.; Elhalouani, F.; Baradai, C. The effect of Cold Work on Structure and Properties of AISI 304 Stainless Steel. *J. Mater. Process. Technol.* 2008, 203, 80–85.
- 5) Jha, A.K.; Sivakumar, D.; Sreekumar, K.; Mittal, M.C. Role of Transformed Martensite in the Cracking of Stainless Steel Plumbing Lines. *Eng. Fail. Anal.* 2008, 15, 1042–1051.
- 6) Qin, Z.; Xia, Y. Role of strain-induced martensitic phase transformation in mechanical response of 304L steel at different strain-rates and temperatures. *J. Mater. Process. Technol.* 2020, 280, 116613.
- 7) Tomita, Y.; Iwamoto, T. Constitutive modeling of TRIP steel and its application to the improvement of mechanical properties. *Int. J. Mech. Sci.* 1995, 37, 1295–1305.
- 8) Zhang, L.; Xu, W.; Liu, C.; Ma, X.; Long, J. Quantitative Analysis of Surface Roughness Evolution in FCC Polycrystalline Metal during Uniaxial Tension. *Comput. Mater. Sci.* 2017, 132, 19–29.
- 9) Yoshida, K. Effect of Grain Scale Heterogeneity on Surface Roughness and Sheet Metal Necking. *Int. J. Mech. Sci.* 2014, 83, 48–56.
- 10) Shimizu, I.; Okuda, T.; Abe, T.; Tani, H. Surface Roughening and Deformation of Grains during Uniaxial Tension of Polycrystalline Iron. *JSME Int. J. Ser. A* 2001, 44, 499–506.
- 11) Furushima, T.; Tsunehashi, H.; Nakayama, T.; Manabe, K.; Alexandrov, S. Prediction of Surface Roughening and Necking Behavior for Metal Foils by Inhomogeneous FE Material Modelling. *Key Eng. Mater.* 2013, 554–557, 169–173.
- 12) Aziz, Abdul; Yang, Ming. Effect of Martensitic Transformation and Grain Size on The Surface Roughening Behavior in SUS 304 and SUS 316 Thin Metal Foils. *A.Eng.MDPI.* October 2020.
- 13) Innocent, Shuro; Umemoto Minoru; Todaka, Yoshikazu; Yokoyama, Seiji; Phase Transformation and Annealing behavior of SUS 304 Austenitic Stainless Steel Deformed by High Pressure Torsion. *Material Science Forum.* Vols.654-656 (2010) pp334-337.





# Paper 21-Aziz Abdul

## ORIGINALITY REPORT

**21** %  
SIMILARITY INDEX

**20** %  
INTERNET SOURCES

**2** %  
PUBLICATIONS

**%**  
STUDENT PAPERS

## PRIMARY SOURCES

**1** [www.mdpi.com](http://www.mdpi.com) 19 %  
Internet Source

**2** [Www.mdpi.com](http://Www.mdpi.com) 1 %  
Internet Source

**3** [pdfs.semanticscholar.org](http://pdfs.semanticscholar.org) 1 %  
Internet Source

**4** Uwe Paul. "Chapter 18 Programmable Logic Devices", Springer Science and Business Media LLC, 2003 1 %  
Publication

**5** Tsuyoshi Furushima, Hitomi Tsunozaki, Ken-ichi Manabe, Sergei Alexandrov. "Ductile fracture and free surface roughening behaviors of pure copper foils for micro/meso-scale forming", International Journal of Machine Tools and Manufacture, 2014 <1 %  
Publication

**6** Soheil Solhjoo, Pieter J. Halbertsma, Mark Veldhuis, Ranko Toljaga, Yutao Pei, Antonis I. <1 %



Vakis. "Effects of loading conditions on free surface roughening of AISI 420 martensitic stainless steel", Journal of Materials Processing Technology, 2020

Publication

---

---

Exclude quotes  On

Exclude matches  < 5 words

Exclude bibliography  On