

# Analysis of Container Yard Capacity In North TPK Using ARIMA Method

*by* Ratna Ekawati

---

**Submission date:** 03-Apr-2023 10:42AM (UTC+0700)

**Submission ID:** 2054178583

**File name:** Sirajuddin\_2018\_IOP\_Conf.\_Ser.\_Mater.\_Sci.\_Eng.\_319\_012031.pdf (1.01M)

**Word count:** 2638

**Character count:** 13845

## PAPER • OPEN ACCESS

## Analysis of Container Yard Capacity In North TPK Using ARIMA Method

6

To cite this article: Sirajuddin *et al* 2018 *IOP Conf. Ser.: Mater. Sci. Eng.* **319** 012031

6

View the [article online](#) for updates and enhancements.

### You may also like

8

- [Improved predictive performance of cyanobacterial blooms using a hybrid statistical and deep-learning method](#)  
Hu Li, Chengxin Qin, Weiqi He et al.

- [10 Identification Deep Learning ARIMA](#)

Paisit Khanarsa, Arthorn Luangsodsai and Krung Sinapiromsaran

- [Autoregressive Planet Search: Application to the Kepler Mission](#)

Gabriel A. Carreres, Eric D. Feigelson, G. Jogesh Babu et al.



### 245th ECS Meeting

San Francisco, CA

May 26–30, 2024



### PRiME 2024

Honolulu, Hawaii

October 6–11, 2024

Bringing together industry, researchers, and government across 50 symposia in electrochemistry and solid state science and technology

Learn more about ECS Meetings at

<http://www.electrochem.org/upcoming-meetings>



Save the Dates for future ECS Meetings!

# Analysis of Container Yard Capacity In North TPK Using ARIMA Method

Sirajuddin, Cut Gebrina Hisbach M, Ratna Ekawati, Ade Irman SM

Industrial Engineering, University of Sultan Ageng Tirtayasa, Indonesia

sirajd\_udin@yahoo.com, gebrinahisbachms@gmail.com, ratna.ti@untirta.ac.id, irman@untirta.ac.id

**Abstract.** North container terminal known as North TPK is container terminal located in Indonesia Port Corporation area serving domestic container loading and unloading. It has 1006 ground slots with a total capacity of 5,544 TEUs and the maximum throughput of containers is 539,616 TEUs / year. Container throughput in the North TPK is increasing year by year. In 2011-2012, the North TPK container throughput is 165,080 TEUs / year and in 2015-2016 has reached 213,147 TEUs / year. To avoid congestion, and prevent possible losses in the future, this paper will analyze the flow of containers and the level of Yard Occupation Ratio in the North TPK at Tanjung Priok Port. The method used is the Autoregressive Integrated Moving Average (ARIMA) Model. ARIMA is a model that completely ignores independent variables in making forecasting. ARIMA results show that in 2016-2017 the total throughput of containers reached 234,006 TEUs / year with field effectiveness of 43.4% and in 2017-2018 the total throughput of containers reached 249,417 TEUs / year with field effectiveness 46.2%.

## 1. Introduction

As a maritime country, Indonesia uses sea transportation as one of the most important modes of transportation. Sea transportation will be smooth as it is supported by good port conditions. Port serves key role in trading between countries, industries, and becomes locomotives of economic growth. One port operator that operates and dominates port business in Indonesia is Indonesia Port Corporation (IPC). IPC was previously known as PT. Pelindo II has developed into a more efficient port service company with modern equipment in every aspect of its operations [1] [2] [7].

IPC has contribution to providing port services to support the creation of cheaper, efficient and safe logistics costs. North TPK is a container terminal located at Port One IPC and has a responsibility to load and unload the domestic container [3]. Port performance depends on the activities in the yard and the availability of the facility in the wharf. If the activities on the yard goes smoothly, the performance of the port will be raise. Because of the activities on the yard has a high impact on the performance of the port, so the activities become the critical point to get higher port performance. The activities on the yard will be go smoothly when the demand of the port in still under the capacity of the yard. This research is expected to be an object to forecast the demand of Indonesian Port, Tanjung Priok, on North TPK yard by using Box-Jenkins ARIMA method [4] [5] [6].

The problems discussed in this research is the flow of the Ships and Containers in Terminal Operation II PT. Tanjung Priok Port, and the level of Yard Occupation Ratio in North TPK at PT Pelabuhan Tanjung Priok. This research is assumed the YOR that applied for the analysis is 80%. The Dwelling Time at container yard North TPK is three days. The maximum Tier on North TPK is 5.5 [6] [8] [9].



Content from this work may be used under the terms of the Creative Commons Attribution 3.0 licence. Any further distribution of this work must maintain attribution to the author(s) and the title of the work, journal citation and DOI.

2. Methodology

2.1. Arima method

Autoregressive Integrated Moving Average (ARIMA) first time developed by George Box and Gwilym Jenkins in 1976, therefore ARIMA also called as Box-Jenkins models. ARIMA Model is also used for time series analysis and data forecasting. ARIMA is highly accurate for short term forecasting, but not so good for long term forecasting. Usually it will show flat or constant data forecasting for long period. ARIMA is a combination from Autoregressive (AR) and Moving Average (MA). ARIMA usually noted in the form of p, d, and q. Form p as degree of process ordo, d as differential ordo, and q as degree of MA process [10] [16][19].

ARIMA Model is a model that fully ignores the independent variable to make a prediction. ARIMA use the past and present dependent value to predict the value in the future accurately. ARIMA can be applied if time series observation statistically connected to each other (dependent). There are four steps in ARIMA Box-Jenkins Method i.e. identification, estimation, diagnostic check and forecasting [10] [11] [12] [13] [14].

2.2. Accuracy and forecasting error

Error calculation can be used to compare between a forecasting method to the other methods. And, it is also used to measure its confidence level. This calculation can be used to make sure the forecasting is going well (Heizer and Render 2009:177) in Savira M, Moeliono Nadya NK, (2014) [11]. The error test in this research using Mean Absolute Percentage Error (MAPE) as the indicator. MAPE is an indicator to show the performance or accuracy of the forecasting. MAPE counted as the mean of absolute differentiation between the prediction and actual value, the result is served as actual value percentage [15] [16]. The formula is shown below:

MAPE = (sum of Absolute percent error) / n (1)

2.3. Formatting author affiliations

This is the flow chart of our research methodology (figure 1), and the flow chart of ARIMA Box-Jenkins method (figure 2): showing a few steps has to be done.

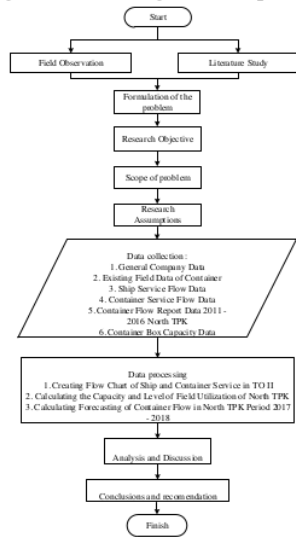


Figure 1. Research Flow Chart.

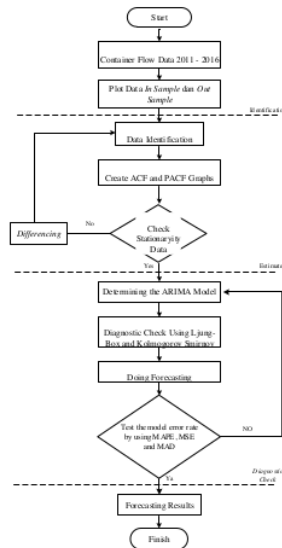


Figure 2. Flowchart of Research Method.

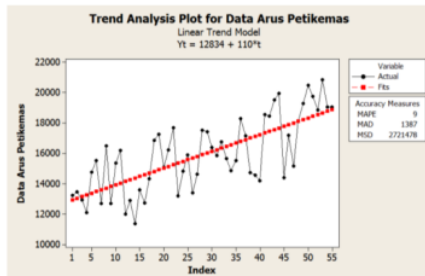
### 3. Result & discussion

This forecasting uses 60 data of throughput on North TPK since March 2011 until April 2016 shown in table 1.

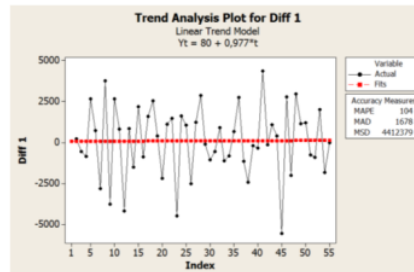
**Table 1.** Data Throughput of North TPK

Month	Period				
	2011-2012	2012-2013	2013-2014	2014-2015	2015-2016
April	13,252	12,023	13,204	14,855	14,402
Mei	13,481	12,892	14,841	15,533	17,191
June	12,945	11,384	15,913	18,299	15,183
July	12,115	13,589	13,394	17,169	9,041
Augustus	14,782	12,723	14,636	9,655	18,138
September	15,529	14,323	7,622	14,751	19,297
October	12,719	9,759	17,524	14,557	20,508
November	9,492	16,875	17,429	14,218	19,753
December	16,487	17,269	16,389	18,578	18,864
January	12,718	15,091	15,859	18,448	20,870
February	15,373	16,219	16,778	19,528	19,050
March	16,187	17,689	15,670	19,945	20,850
<b>TOTAL</b>	<b>165,080</b>	<b>169,836</b>	<b>179,259</b>	<b>195,536</b>	<b>213,147</b>

The first step is data identification. The 5 data was deleted because throughput gets down so fast makes the data cannot use. The data is separated in two, 33 data in sample and 22 data out sample. Figure 3 shown data plot of throughput on TPK Utara. Data plot showing un-stationer data, it needs data differencing, shown in figure 4.



**Figure 3.** Graphic Trend Analysis Data Throughput.



**Figure 4.** Graphic Trend Analysis Data Throughput Differencing.

After data differencing the data plot has been stationer, and then we make autocorrelation graphic, FAK, in figure 5 and partial autocorrelation graphic, FAKP, in figure 6. From FAKP graphic differencing 1, we can see lag 1, lag 2, lag 10 and lag 14 is cut through white noise line, but the graphic doesn't goes down but following Cygnus graphic.

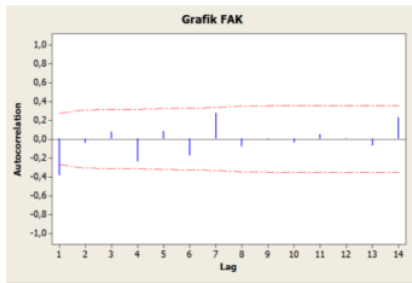


Figure 5. Graphic Autocorrelation (FAK).

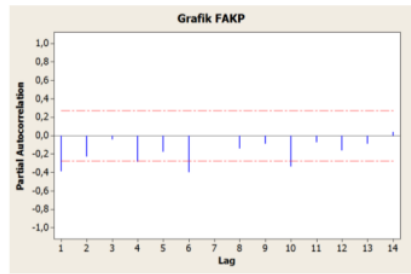


Figure 6. Graphic Partial Autocorrelation (FAKP)

The model that predicted by FAK and FAKP graphic is ARIMA (1, 1, 1). AR (1) because FAK is disconnected on the first lag, integrated (1) because the data get stationer after 1 time differencing and MA (1) because FAKP is disconnected on the first lag. On parameter estimation steps there are three model prediction of ARIMA i.e. (0,1,1), (1,1,0) and (1,1,1). We took the model with the smallest Mean Square, because the smaller the mean square the more accurate the prediction. The smallest MS is model (1,1,1) with 3,366,598. This is the output of Minitab model (1,1,1):

4 ARIMA Model: Container Throughput

Estimates at each iteration

Iteration	SSE	Parameters		
0	678501129	0.100	0.100	115.992
1	544473884	-0.050	0.250	126.375
2	522551991	0.045	0.400	114.821
3	496792953	0.124	0.550	104.998
4	466664540	0.189	0.700	95.678
5	432124621	0.247	0.850	82.912
6	396756049	0.292	1.000	62.311
7	381891489	0.142	0.995	93.893

4 Unable to reduce sum of squares any further  
Final Estimates of Parameters

Type	Coef	SE Coef	T	P	
AR	1	0,2366	0,1920	1,23	5,223
MA	1	0,8227	0,1160	7,09	0,000

Differencing: 1 regular difference  
Number of observations: Original series 55, after differencing 54  
Residuals: SS = 175063102 (backforecasts excluded)  
MS = 3366598 DF = 52

Modified Box-Pierce (Ljung-Box) Chi-Square statistic

Lag	12	24	36	48
Chi-Square	11,6	21,5	37,5	52,2
DF	10	22	34	46
P-Value	0,312	0,492	0,313	0,246

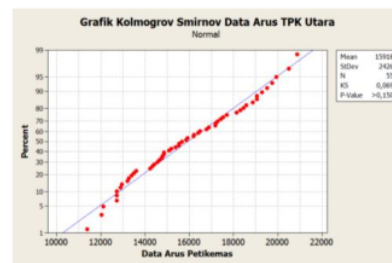


Figure 7. Graphic Kolmogorov Smirnov

Because all of the parameter on significant and residual model is meet the terms of white noise and distributed normally, ARIMA model (1,1,1) is the right model to the forecasting. Forecasting result showing total throughput in 2016-2017 reach 214,911 TEUs/Year and in 2017-2018 reach 229,125 TEUs/Year. The Table above showing the Yard Occupancy Ratio on North TPK in 2016-2017 reach 39,8% and in 2017-2018 reach 42,5%.

#### 4. Conclusion

Container yard on North TPK is able to accommodate 5,544 TEUs container and able to cater the throughput up to 539,616 TEUs/Year. Forecasting Model that we used to predict the throughput in 2016-2017 and 2017-2018 is ARIMA (1,1,1) with MS value 3,366,598 MAPE value 3.36972 with total throughput forecasted 214,911 TEUs in 2016-2017 with YOR 39,8% and 229,125 TEUs in 2017-2018 with YOR 42,5% these forecasting result in North TPK is showing that North TPK is still able to cater the throughput.

#### References

- [1] Amiron HSB, Shahdan. 2009. *Analysis of Feasibility of Size of Docks Length, Warehouse of loading and unloading of cargo case of The Dock of Ujung Baru Port of Belawan Harbor*. (Essay). Medan: Faculty of Civil Engineering University of North Sumatra.
- [2] Anita Firlani. 2016. *Due Certain Goods Delivery Time (DT) in the Lifting of Goods by Sea Based on Sales Contract* (Sales Contract). (Essay). Bandar Lampung: Faculty of Law University of Lampung
- [3] Arlius, Farendy. 2014. *Forecasting Rate of Usage of Container Crane (CC) and Utility Container Crane (CC) and Rubber Tyred Gantry (RTG) at Banjarmasin Container Terminal*. (Thesis). Surabaya: Faculty of Marine Technology Sepuluh November Institute of Technology.
- [4] Aurelia. 2015. *Dynamic System Simulation to Minimize Waiting Time of Ship Using Powersim In Banten CDG Port*. (Essay). Cilegon: Industrial Engineering University of Sultan Ageng Tirtayasa
- [5] Hadijah. 2013. *Forecasting Operational Reservation with Minitab Program Using ARIMA Approach PT Surindo Andalan*. Journal The Winners. Vol **14**, No: 1 p. 13-19
- [6] Indayani, Eka Febri. 2009. *Forecasting Number of Train Passengers by Using Box-Jenkins Method (Case Study at PT Kereta Api (Persero) DAOP IV Yogyakarta)*. (Essay). Yogyakarta: FMIPA State Islamic University Sunan Kalijaga
- [7] IPC. 2015. *Annual Report IPC Revisi 24 Juli 2015. Annual Report*. Jakarta Utara : Indonesia Port Corporation
- [8] Iriani. 2010. *Measurement of Work Efficiency with Data Envelopment Analysis Approach*. (Essay). East Java: Industrial Engineering UPN "Veteran"
- [9] Narindra RAA, Al Musadieg M, Supriono. 2016. *Analysis of the Effect of Dwelling Time on Revenue (Study on Semarang Container Terminal 2011 - 2015)*. Journal of Business Administration (JAB) Vol. **41**, No: December 1, 2016.
- [10] Panjaitan L, Tarigan G, Bagun P. 2013. *Forecasting of Aluminum Bars Production at PT Inalum by ARIMA Method*. Saitia Mathematic. Vol. **1**, No: 1 pp 1-10. North Sumatra: FMIPA Universitas Sumatera Utara
- [11] Savira M, Moeliono Nadya NK. 2014. *Analysis of Generic Drug Sales Forecasting Prologue (OGB) at PT Farma Indonesia*. (Essay). Bandung: Faculty of Economics and Business Telkom University
- [12] Shintya, Wike, Mas'ud Effendi. 2013. *Analysis of Product Distribution Efficiency by Data Envelopment Analysis Method (DEA) Case Study at UD Sabar Jaya Malang*. (Essay). Malang: University of Brawijaya
- [13] Siswadi. 2005. *Assessment of Container Loading Equipment Loading at Semarang Container Terminal (TPKS)*. (Thesis). Semarang: Civil Engineering Diponegoro University
- [14] Soeharto. 2003. *Review of Equipment Facilities of Loading and Unloading of Goods at Container Terminal at Tanjung Emas Port*. (Thesis). Semarang: Civil Engineering Diponegoro University
- [15] Soludale, Anastasia M.N. 2013. *Assessment of Load Loading Container Performance Facility at Port L. Say Maumene*. (Thesis). Yogyakarta: Civil Engineering Atmajaya University
- [16] Sukma Arini. 2011. *World Statistics - Method Kolmogorov Smirnov for Normality Test*. April 22, 2011. [Cited: January 18, 2017]. Available from URL:<http://arini2992.blogspot.co.id/2011/04/metode-kolmogorov-smimov-untuk-uji.html>

- [17] Sutarti, 2009. *Use of Time-Based Analysis Method with Minitab Relief 11 for Window for Forecasting Textil Production at PT Primatexco Indonesia Batang Regency*. (Thesis). Semarang: FMIPA Semarang State University
- [18] Vacca, I., Salani, M., Bierlaire, M. 2010. *Optimization of Operations in Container Terminals.: Hierarchical vs Integrated Approaches*. Lausanne : Ecole Polytechnique Federal de Lausanne
- [19] Viara Novita Rizkiyah, 2015. *Normality Test Using Chi Square Test, Kolmogorov Smirnov Test (KS) and Lilliefors Test*. May 7, 2015. [Cited: January 18, 2017]. Available from URL: <http://viararizkiyah.blogspot.co.id/2015/05/ujinormalitas-menggunakan-uji.html>
- [20] Wibowo, Harmaini. 2010. *Analysis of Factors Affecting Waiting Time for Ships in Port Tanjung Emas Semarang*. (Thesis). Semarang: Civil Engineering Diponegoro University



# Analysis of Container Yard Capacity In North TPK Using ARIMA Method

## ORIGINALITY REPORT

28%

SIMILARITY INDEX

23%

INTERNET SOURCES

13%

PUBLICATIONS

13%

STUDENT PAPERS

## PRIMARY SOURCES

1	<a href="http://china.iopscience.iop.org">china.iopscience.iop.org</a> Internet Source	7%
2	Submitted to School of Business and Management ITB Student Paper	5%
3	<a href="http://umpir.ump.edu.my">umpir.ump.edu.my</a> Internet Source	2%
4	<a href="http://adoc.pub">adoc.pub</a> Internet Source	2%
5	<a href="http://repository.ub.ac.id">repository.ub.ac.id</a> Internet Source	2%
6	<a href="http://www.researchgate.net">www.researchgate.net</a> Internet Source	1%
7	Wiwin Sri Rahayu, Pitojo Tri Juwono, Widandi Soetopo. "Discharge prediction of Amprong river using the ARIMA (autoregressive integrated moving average) model", IOP Conference Series: Earth and Environmental Science, 2020	1%

8

Ridha Rizki Novanda, Eko Sumartono, Putri Suci Asriani, Ellys Yuliarti et al. "A Comparison of Various Forecasting Techniques for Coffee Prices", Journal of Physics: Conference Series, 2018

Publication

1 %

---

9

[www.jemis.ub.ac.id](http://www.jemis.ub.ac.id)

Internet Source

1 %

---

10

R Rosmiati, S Liliyasi, B Tjasyono, T R Ramalis. "Development of ARIMA technique in determining the ocean climate prediction skills for pre-service teacher", Journal of Physics: Conference Series, 2021

Publication

1 %

---

11

Submitted to World Maritime University

Student Paper

1 %

---

12

Submitted to Far Eastern University

Student Paper

1 %

---

13

Yosua Alvin Adi Soetrisno, Eko Handoyo, Muhammad Haikal Ilyasa, Denis, Enda Wista Sinuraya. "T-series analysis for predicting apple prices in Indonesian market using the SARIMA method", Proceedings of the International Conference on Advanced Information Science and System, 2019

Publication

1 %

---

14	<a href="http://www.science.gov">www.science.gov</a> Internet Source	<1 %
15	Sirajuddin, T. Yuri Zagloel, Sunaryo. "Effect of strategic alliance based on port characteristic and integrated global supply chain for enhancing industrial port performance", Cogent Business & Management, 2019 Publication	<1 %
16	<a href="http://pubmed.ncbi.nlm.nih.gov">pubmed.ncbi.nlm.nih.gov</a> Internet Source	<1 %
17	<a href="http://repository.syekhnurjati.ac.id">repository.syekhnurjati.ac.id</a> Internet Source	<1 %
18	<a href="http://www.wipro.com">www.wipro.com</a> Internet Source	<1 %
19	Athaya Putri Slavia, Edi Sutoyo, Deden Witarsyah. "Hotspots Forecasting Using Autoregressive Integrated Moving Average (ARIMA) for Detecting Forest Fires", 2019 IEEE International Conference on Internet of Things and Intelligence System (IoT&IS), 2019 Publication	<1 %
20	Sayed S R Moustafa, Sara S Khodairy. "Comparison of different predictive models and their effectiveness in sunspot number prediction", Physica Scripta, 2023 Publication	<1 %

21

R N Putri, M Usman, Warsono, Widiarti, E Virginia. "Modeling Autoregressive Integrated Moving Average (ARIMA) and Forecasting of PT Unilever Indonesia Tbk Share Prices During the COVID-19 Pandemic Period", Journal of Physics: Conference Series, 2021

Publication

<1 %

---

Exclude quotes Off

Exclude matches Off

Exclude bibliography Off