

# Genetic diversity of red rice varieties originating from West Java and Banten based on SSR marker related to palatability

*by Kartina Am*

---

**Submission date:** 01-May-2023 05:49AM (UTC+0700)

**Submission ID:** 2080141827

**File name:** Genetic\_diversity\_of\_red\_rice\_varieties\_originating.pdf (618.36K)

**Word count:** 3258

**Character count:** 17240

PAPER · OPEN ACCESS

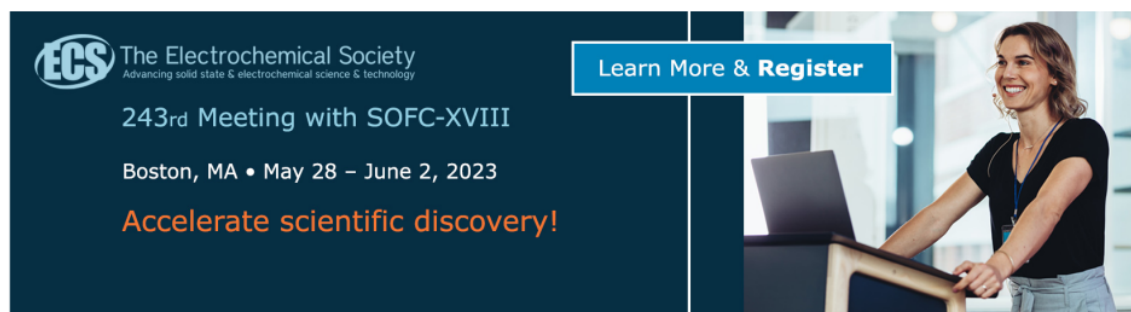
## Genetic diversity of red rice varieties originating from West Java and Banten based on SSR marker related to palatability

To cite this article: Susiyanti *et al* 2020 *IOP Conf. Ser.: Earth Environ. Sci.* **482** 012037

View the [article online](#) for updates and enhancements.

### You may also like

- [Genetic diversity of local red rice cultivars collections of Yogyakarta AIAT, Indonesia based on morphological character](#)  
Kristantini, S Widyayanti and H Purwaningsih
- [Genetic diversity assessment of Indonesian sorghum germplasm based on agro-morphological traits](#)  
Sigit Budi Santoso, Muzdalifah Isnaini, Marcia Bunga et al.
- [Heritability and path coefficient analysis for important characters of yield component related to grain yield in M4 red rice mutant](#)  
M Riadi, R Sjahrii, N Kasim et al.




**ECS** The Electrochemical Society  
Advancing solid state & electrochemical science & technology

**243rd Meeting with SOFC-XVIII**  
Boston, MA • May 28 – June 2, 2023

**Accelerate scientific discovery!**

**Learn More & Register**



## Genetic diversity of red rice varieties originating from West Java and Banten based on SSR marker related to palatability

Susiyanti<sup>1\*</sup>, Nurmayulis<sup>1</sup>, F R Eris<sup>1</sup>, A M Kartina<sup>1</sup>, Y Maryani<sup>2</sup> and T Aryani<sup>1</sup>

<sup>1</sup> Department of Agroecotechnology, Faculty of Agriculture, University of Sultan Agung Tirtayasa, Jalan Raya Jakarta Km 4, Pakupatan, Kota Serang 42123, Banten, Indonesia

<sup>2</sup> Department of Chemical Engineering, Faculty of Engineering, University of Sultan Agung Tirtayasa, Jalan Jendral Soedirman Km 3, Cilegon 42435, Banten, Indonesia

\*E-mail: susiyanti@untirta.ac.id

**Abstract.** West Java and Banten Provinces have diverse local red rice varieties/accessions to support national food security, not only in terms of quantity but also the quality of rice. Good eating quality is closely related to palatability. Palatability is a property that is directly related to the quality of rice feeding, aroma, appearance, taste and texture. This study aimed to analyze the genetic diversity and DNA fingerprint profiles of local red rice accessions from West Java dan Banten using molecular markers related to palatability. A total of 12 red rice accessions and four local red rice accessions from Banten and West Java Provinces were estimated their genetic diversity, respectively. The SSR primers used were Ams (linked with aspartate aminotransferase), GPA (glucosamine-fructose-6-phosphate aminotransferase), GBSS1 (granule-bound starch synthase), CBG (nano cyanogenic  $\beta$ -glucosidase), SS1 (starch synthase), SBE1 (glucosidic linkage of  $\alpha$ -polyglucan), RM510 (gel consistency), RM13 (protein content) and RM410 (aromatic). The dendrogram showed two main groups of red rice accessions. The first group consisted of Mayang, Tambleg, Sengkeuhan, Pare Jaketra, Jalawara Hawara, Gadok, Carogol, Beureum Batu, Waren, Segubal, Tampai Beureum and Leger Pondok (similarity reached 80.5%). The second group consists of Kapundung, Cere Beureum and Cireh Hideung with a similarity of 79.5%.

Keywords: Banten, palatability, red rice, SSR, West Java.

### 1. Introduction

Rice is the main food crop in Indonesia and consumed as staple food. There are various colours of rice depending on the pigment, especially anthocyanin in the pericarp layer, seed coat or aleurons, such as red rice and black rice. The most consumed rice is white one. Red rice contains a high enough vitamin B complex, fibre, essential fatty acids and anthocyanin compounds that are very beneficial to health [1]. Several studies have shown that red rice can be a good source of antioxidants derived from anthocyanin pigments. Islam et al. [2] reported that the red rice population observed in Bangladesh showed differences in coloured pericarp pattern.

Indonesia is known to have a high diversity of rice species and has about 17,000 germplasm accessions [3]. In the 2000s, the number of local rice in the farmers' land had been greatly decreased. Only in certain areas, local rice varieties are still grown by farmers because of the excellent quality and, thus, high selling price. Only a few locations in Banten farmers are still planting local rice



Content from this work may be used under the terms of the [Creative Commons Attribution 3.0 licence](https://creativecommons.org/licenses/by/3.0/). Any further distribution of this work must maintain attribution to the author(s) and the title of the work, journal citation and DOI.

Published under licence by IOP Publishing Ltd

varieties, such as in Cihara, Lebak District. The genetic erosion of rice crops will be more critical if no local rice conservation efforts are made.

Palatability is a property that is directly related to the quality of rice feeding, determined by the fragrance, appearance, taste and texture. The quality of rice flavour is strongly influenced by the physicochemical properties of rice [4]. Some of the genes involved in the synthesis of starch, amino acids, amino sugars and lipids have effects on the physicochemical properties of rice starch which determine the palatability of rice. Therefore, many genetic factors play a role to contribute the rice palatability. Molecular markers have been used to monitor the variation of DNA sequences among varieties. Some molecular markers such as Simple Sequence Repeats (SSR) have been identified to be linked to several genes for essential characters in rice plants [5,6]. Accordingly, we have done research on genetic diversity of West Java and Banten red rice accessions based on palatability SSR markers. The purpose of this study was to analyze the genetic diversity and grouping of accessions of red rice germplasm from the local origin of West Java and Banten based on its DNA fingerprint profile using nine SSR markers linked to the palatability characters.

## 2. Materials and methods

A total of 16 red rice accessions from Banten dan West Java were used in this study. Red rice accessions from Banten Province are Cere Beureum, Kapundung, Pondok Leger, Tampai Beureum, Segubal, Waren, Beureum Batu, Carogol, Jalahawara, Pare Jaketra, Manikan and Tambleg. Red rice accessions from West Java Province are Cere Hideung, Gadok, Mayang and Sengkuhan. The research was conducted from March to June 2017, in the Greenhouse of Certification Center of Horticulture Plant's Seed at Serang, Banten, and Laboratory of Biotechnology, Faculty of Agriculture, Sultan Ageng Tirtayasa University, Serang, Banten Province.

The research used a descriptive qualitative method including data collection, data analysis and data interpretation. The procedure started with the rice seed seedling for up to 21 days after planting (DAP), and then the DNA was isolated from the young leaves. The DNA isolation used the CTAB method to produce DNA for good PCR amplification. A PCR reaction used nine SSR primers related to rice palatability (Table 1) using standard SSR method and the amplicons were migrated by electrophoresis using 3% agarose gel. Ethidium bromide was used for staining, and then the bands were visualized under UV with Geldoc. The DNA patterns were scanned for the presence of bands and DNA profiles embedded in binary data for "cluster tree analysis". Summary statistics (gene diversity index, PIC and heterozygosity) for all primer was calculated based on the polymorphic alleles.

**Table 1.** The SSR primers based on palatability gene.

Primer	Chr	Sequence		Linked gene
		Forward (5'-3')	Reverse (5'-3')	
AMs	2	CTTCCAAGGACCCATCCT	CCCAACATCTCCGTCAGAAT	Aspartate aminotransferase <sup>2</sup>
GPA	11	AATACGCGGCCTTCTCTAT	TTGATCCGAATGGGTCAAAT	Glucosamine-fructose-6-phosphate aminotransferase <sup>2</sup>
GBSS1	6	CAAATAGCCACCCACACCAC	CTTGCAGATGTTCTTCTGATG	Granule-bound starch synthase <sup>1</sup>
CBG	10	AGCTTCCCTAATGGCTTCGT	ATTTGCCAACTTTTGGATGG	Non-cyanogenic $\beta$ -glucosidase <sup>2</sup>
SS1	6	GATCCGTTTTTGCTGTGCC	CCTCCTCTCCGCCGATCCTG	Starch synthase <sup>1</sup>
SBE1	6	ATTTCTTTGGCCACAGGCGA	CCCAGATTCGGAACAAGAAC	Glucosidic linkage of a-polyglucan <sup>3</sup>
RM510	6	AACCGGATTAGTTTCTCGCC	TGAGGACGACGAGCAGATTC	Gel consistency <sup>4</sup>
RM13	5	TTGGATTGTTTTGCTGGCTCG	GGAACACGGGGTCGGAAGCGAC	Protein content <sup>5</sup>
RM410	9	GCTCAACGTTTCGTTCTCTG	GAAGATGCGTAAAGTGAACGG	Aromatic <sup>6</sup>

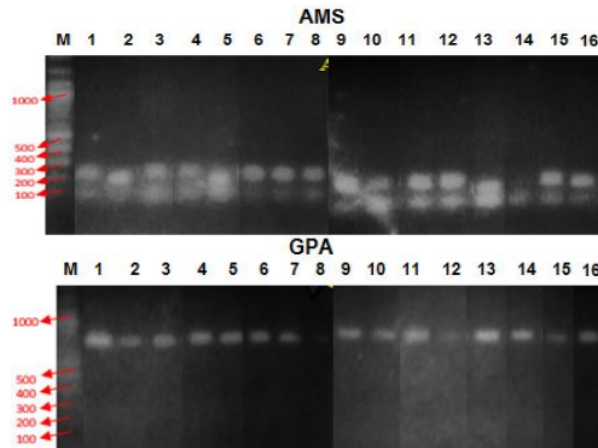
Chr = chromosome.

<sup>1</sup>[5], <sup>2</sup>[6], <sup>3</sup>[7], <sup>4</sup>[8], <sup>5</sup>[9], <sup>6</sup>[10].

### 3. Results and discussion

The isolated DNA was diluted to get uniform concentration of about 10–50 ng/ $\mu$ l for PCR. The PCR amplification results were presented in Figure 1.

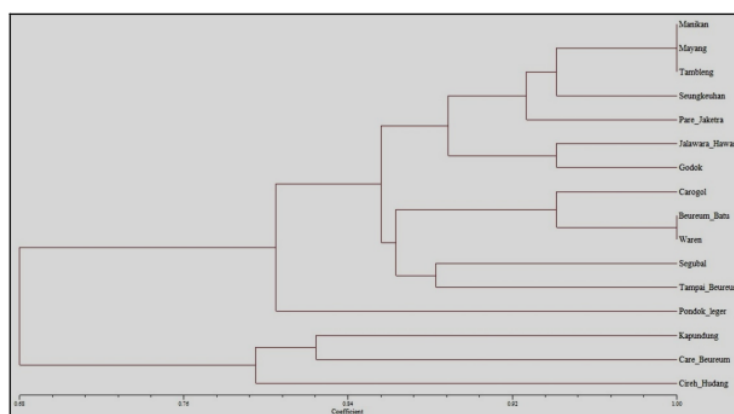
DNA fingerprint profiles in digital values provided easy identification of rice accessions/varieties. Digital values of DNA patterns based on 9 SSR markers are shown in Table 2. The values showed uniqueness of each accession. Bereum Batu and Waren have the same digital value pattern. The same values were also found between Manikam, Mayang and Tambeleg rice accessions.



**Figure 1.** PCR amplification results using molecular markers of AMS and GPA SSR primers based on palatability. M = 100 bp DNA ladder, 1 = Cere Hideung, 2 = Cere Beureum, 3 = Kapundung, 4 = Pondok Leger, 5 = Tampai Beureum, 6 = Segubal, 7 = Waren, 8 = Beureum Batu, 9 = Carogol, 10 = Gadok, 11 = Jalahawara, 12 = Pare Jaktea, 13 = Sengkeuhan, 14 = Tambeleg, 15 = Mayang, 16 = Sengkuhan.

The number of alleles, gene diversity, heterozygosity and PIC values of 16 accessions with the 9 SSR is summarized in Table 3. The number of alleles detected was 15–28 alleles, with an average of gene diversity about 0.93. Heterozygosity is obtained from the calculation of gene frequencies at each locus [11]. Based on heterozygosity values, AMs, GBSS1, SS1, SBE1 and RM13 primers are able to distinguish heterozygosity. Conversely, the primers with a heterozygosity value of 0 are assumed to be unable to distinguish heterozygosity (GPA, CBG, RM510 and RM410). The value of heterozygosity close to 0 is low, while the value of heterozygosity close to 1 is high [11].

The polymorphic alleles were analyzed by calculating how many percents of the polymorphic alleles obtained in each SSR primer used. The level of primers informativeness is determined by the calculation of PIC. PIC value provides an estimate of the distinguishing power of a marker by computing not only the number of alleles in one locus, but also the relative frequency of the alleles of an identified population. PIC value becomes the standard to evaluate the genetic markers based on PCR amplified DNA pattern [12,13]. Therefore, PIC value is divided into three classes: highly informative ( $PIC > 0.5$ ), moderately informative ( $0.25 > PIC > 0.5$ ) and slightly informative ( $PIC < 0.25$ ). According to Table 3, the average PIC value was 0.93, which means that all of the primers were highly informative. This study used nine primers (AMs, GPA, GBSS1, CBG, SS1, SBE1, RM510, RM13 and RM410), where each primer has been linked to genetically different characters.



**Figure 2.** Dendrogram of 16 red rice accessions from West Java and Banten.

**Table 2.** The digital value of conversion of DNA patterns based on 9 SSR markers.

Accession	Digital values	Accession	Digital values
Manikan	1.011.100.100.101.111	Tambleg	1.011.100.100.101.111
Kapundung	0.111.111.100.101.110	Pondok leger	0.111.100.000.101.111
Carogol	1.011.101.000.101.011	Segubal	1.011.110.000.101.111
Beureum Batu	1.011.101.000.101.111	Tampai Beureum	1.011.100.000.100.111
Care Beureum	0.111.101.000.001.110	Cereh Hideung	0.111.100.101.001.110
Waren	1.011.101.000.101.111	Gadok	1.011.100.000.001.111
Jalawara Hawara	1.011.100.100.001.111	Mayang	1.011.100.100.101.111
Pare Jaketra	1.011.101.100.101.111	Seungkeuhan	1.011.100.110.101.111

**Table 3.** The number of alleles, gene diversity, heterozygosity and PIC values of 16 accessions with 9 SSR markers in terms of palatability gene.

Primer	Number of alleles	Gene diversity index	Heterozygosity	PIC
AMs	17	0.91	0.07	0.91
GPA	15	0.92	0.00	0.91
GBSSI	19	0.92	0.12	0.92
CBG	19	0.94	0.00	0.94
SSI	28	0.96	0.25	0.96
SBE1	28	0.96	0.03	0.96
RM510	19	0.93	0.00	0.93
RM13	25	0.95	0.31	0.94
RM410	14	0.89	0.00	0.89
Total	184	8.38	0.78	8.36
Average	20.4	0.93	0.09	0.93

AMs markers can predict characters that have a sense of taste and aroma, especially aspartate aminotransferase. Lestari et al. [14] used AMs as DNA markers for eating quality of indica rice in Indonesia. The GPA primer amplified 900 bp fragment which may indicate the presence of glucosamine fructose-6-phosphate aminotransferase. In addition, Utami et al. [15] used GPA primers as DNA markers for physical grain in red rice, indicating its support to red rice research in Indonesia.

The GBSSI primer detected the presence of granule-bound starch synthase genes which function to synthesize amylose *in vivo*. CBG markers are markers for the presence of non-cyanogenic glucosidase located on chromosome number 10. CBG markers can predict the character of the taste and aroma [6].

The SSI primer marked the presence of starch synthase 1 which has a function in the catalytic activity of starch biosynthesis [16]. There are variations in alleles found at the locus associated with starch synthesis, one of which is starch synthase 1 on chromosome number 6 (can be marked by primer SS1) and *Waxy* gene or *Wx* also on chromosome 6 using a GBSSI primer (granule-bound starch synthase). The existence of the *Wx* gene contributes to amylose levels.

The SBE1 primers are related to the character of the *Waxy* (*Wx*) gene, the soluble starch synthase I (SS1) gene and the starch branching enzyme 1 (SBE1) gene [17]. Primer RM510 can be used to estimate the presence of characters related to the consistency of gel in rice plants [8]. The consistency of the gel will determine the texture of rice after cooking. Rice with soft gel cooking consistency is soft and remains soft even after cooling. Rice with soft gel consistency is preferred by most rice consumers.

The RM13 primer can predict the characters associated with grain protein content in rice which can be seen with a band measuring at 141 bp [9]. The protein content is an indirect indicator of the quality of rice taste. According to Lestari and Koh [6], low protein content and increased stickiness and texture caused high palatability. The physicochemical properties of varied rice starches are genetically affected.

Figure 2 shows a dendrogram consisting of two large groups of red rice. The first group consisted of Mayang, Tambleg, Sengkeuhan, Pare Jaketra, Jalawara Hawara, Gadok, Carogol, Beureum Batu, Waren, Segubal, Tampai Beureum and Pondok Leger. The second group consisted of Kapundung, Cere Beureum and Cireh Hideung. The difference between germplasm in both groups was 32%. Group 1 has a similarity of 80.5%, while the second group has a similarity of 79.5%. Manikam, Mayang and Tambleg accessions are 100% similar. One-hundred percent similarity, which indicates the same palatability characters, was also found between Beureum Batu and Waren. Similarity coefficients are the standard genetic level between accessions. The greater the coefficient of similarity, the more closely the accession is, thus genetically similar. This information is needed in plant breeding activities. However, to date, the physicochemical/palatability properties of various rice accessions are generally still conventionally determined, which requires a large number of rice samples. DNA markers that are developed quickly can be an alternative method for rapid and efficient evaluation, and can predict their potential physicochemical properties.

#### 4. Conclusions

All nine SSR markers related to rice palatability were able to estimate genetic diversity of local red accessions from Banten and West Java. The red rice accessions from these two provinces were highly diverse as reflected by their high gene diversity index and PIC value. All SSR markers proved their high informativeness as indicated by the PIC values. Most of these rice accessions could be distinguished according to the specific DNA fingerprint profiles generated in this study. The red rice accessions belong to two major groups without considering their local origin.

#### 5. Acknowledgement

This research was supported by Grants-in-Aid #24405049 and #25257416 from the Japan Society for the Promotion of Science.

## 6. References

- [1] Rohman A, Helmiyati S, Hapsari M and Setyaningrum D 2014 Rice in health and nutrition *Int. Food Res. J.* **21** 13–24
- [2] Islam M Z, Khalequzzaman M, Prince M F R, Siddique M A, Rashid E S M, Ahmed M S, Pittendrigh B and Ali M P 2018 Diversity and population structure of red rice germplasm in Bangladesh *PLoS One* **13** 1–20
- [3] Fitriyanti 2008 *Keragaman Genetik Plasma Nutfah Beberapa Genotip Padi Asal Sumatra Barat Berdasarkan Analisis Penanda RAPD* (Universitas Andalas)
- [4] Cho Y, Baek M, Suh J, Won Y, Lee J, Kim J, Park H, Kim W, Kwon S, Cho Y, Kim B and Lee J 2014 QTL detection associated with eating quality based on palatability test in *japonica* rice (*Oryza sativa* L.) *Plant Breed. Biotechnol.* **2** 342–53
- [5] Lestari P, Risliawati A and Koh H 2012 Identifikasi dan aplikasi marka berbasis PCR untuk identifikasi varietas padi dengan palatabilitas tinggi *J. AgroBiogen* **8** 69–77
- [6] Lestari P and Koh H 2013 Evaluasi kandungan protein dan sifat pasta beras *japonica* dengan marka DNA *Ber. Biol.* **12** 141–52
- [7] Lestari P, Ham H, Lee H, Jiang W, Wook O, Kwon, S W, Chu S, Cho Y and Koh H 2009 PCR marker-based evaluation of the eating quality of *japonica* rice (*Oryza sativa* L.) *J. Agric. Food Chem.* **57** 2754–62
- [8] Susanto U, Rohmah N and Mejaya M 2015 Distinguishing rice genotypes using morphological, agronomical, and molecular marker *J. Penelit. Pertan. Tanam. Pangan* **34** 79–88
- [9] Patil A, Premi V, Sahu V, Dubey M, Sahu G and Chandel G 2014 Identification of elite rice germplasm lines for grain protein content, SSR based genotyping and DNA fingerprinting *Int. J. Plant Anim. Environ. Sci.* **4** 127–36
- [10] Patel N, Dhirhi N, Shrivastava R and Sahu M 2015 Molecular characterization of rice germplasm (*Oryza sativa* L.) using simple sequence repeat (SSR) markers *Plant Arch.* **15** 1151–6
- [11] Mulliadi D and Arifin J 2010 Pendugaan keseimbangan populasi dan heterozigositas menggunakan pola protein albumin darah pada populasi domba ekor tipis (Javanese thin tailed) di daerah Indramayu (Equilibrium prediction of population using blood albumin pattern of thin tailed sheep in Indramayu area) *J. Ilmu Ternak* **10** 65–72
- [12] Carsono N, Lukman P, Damayanti F, Susanto U and Sari S 2014 Identifikasi polimorfis marka-marka molekuler yang diduga berkaitan dengan karakter daya hasil tinggi pada 30 genotip padi *Chim. Nat. Acta* **2** 91–5
- [13] Shahriar M, Robin A H, Begum S and Hoque A 2014 Diversity analysis of some selected rice genotypes through SSR based molecular markers *J. Bangladesh Agric. Univ.* **12** 307–11
- [14] Lestari P, Jiang W, Chu S, Reflinur, Sutrisno, Kusbiantoro B, Kim B, Piao R, Cho Y, Luo Z, Chin J and Koh H 2015 DNA markers for eating quality of *indica* rice in Indonesia *Plant Breed.* **134** 40–8
- [15] Utami S, Widyastuti U, Utami D W, Rosdianti I and Lestari P 2017 Molecular marker-assisted selection of rice grain quality on rice (*Oryza sativa* L.) lines tolerant to Fe toxicity stress *J. Trop. Life Sci.* **7** 268–76
- [16] Lestari P and Reflinur R 2016 Genetic diversity of *japonica* rice (*Oryza sativa* L.) based on markers corresponding to starch synthesizing genes *Makara J. Sci.* **20** 49–54
- [17] Bao J, Jin L, Xiao P, Shen S, Sun M and Corke H 2008 Starch physicochemical properties and their associations with microsatellite alleles of starch-synthesizing genes in a rice RIL population *J. Agric. Food Chem.* **56** 1589–1594



# Genetic diversity of red rice varieties originating from West Java and Banten based on SSR marker related to palatability

---

ORIGINALITY REPORT

---

**22%**  
SIMILARITY INDEX

**19%**  
INTERNET SOURCES

**19%**  
PUBLICATIONS

**9%**  
STUDENT PAPERS

---

MATCH ALL SOURCES (ONLY SELECTED SOURCE PRINTED)

---

10%  
★ **iopscience.iop.org**  
Internet Source

---

Exclude quotes    On  
Exclude bibliography    On

Exclude matches    Off